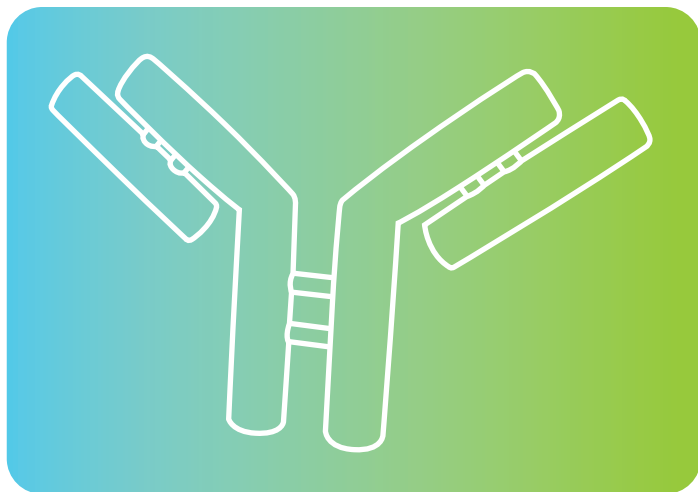


Product Catalog | 2023-2024

Immunoassays, Controls & Equipment



VAST 
Versatile Analyte Selection Technology

AccuBind 
ELISA Microwells

AccuLite 
CLIA Microwells



Message from Monobind's president:



Dr. Frederick R. Jerome, CEO competitive advantage built from cost-efficiency. Monobind's history reveals a commitment to R&D and an impressive record of innovation in basic diagnostic techniques. Our products have helped transform the diagnostic practices from science to art by enabling improved, reliable patient care at an affordable cost.

In recent years, Monobind has integrated its systems to harmonize communications and work between R&D, QC, Manufacturing and Administration. We make continual improvements and have put substantial investment into our website to allow customers to access their account 24 x 7. Customers can go online to place orders, check order status, and view their account history and statements. Monobind's focus and dedication, as well as the market's growing demand for our product line make our many innovations possible.

This includes our totally unique, VAST® immunoassay product line which uses combination calibrators to support detection of multiple analytes in just one kit. VAST® is available in ELISA and CLIA for Anemia, Cancer, Diabetes, Fertility, Prenatal and Thyroid Panels with more to come in the future..

Monobind works with leading automated and semi-automated instrument makers to customize equipment for our AccuBind® ELISA and AccuLite CLIA® products. Monobind offers analyzers for both products, including NeoEldex®, PrisMatic®, Impulse®, NeoLumax®, Autoplex®, TITIN® as well as Plate Wash. With TITN, we introduce a larger format automated analyzer with two-reaction plates for ELISA and CLIA assays. Additionally, we provide 100s of applications for existing instrumentation from such companies as Awareness Technology, Gold Standard Diagnostics and Dynex. We thank our partners for their collaboration and support, which has allowed our positioning to meet the needs of small-to-large volume testing in clinical labs.

Finally, I wish to thank our customers and distributors for their support and dedication. Their efforts have resulted in Monobind brand recognition in the highly competitive, global immunoassay market. This would not be possible without Monobind's team of skilled professionals who provide the fundamental base for our market success. With our rigorous pursuit of excellence and new product development, Monobind is building a robust future in the biomedical field. We hope to share this vision with you.

Dr. Frederick R. Jerome
CEO

Since its inception in 1977, Monobind, an ISO 13485 certified company, has pioneered in providing diagnostic tools to healthcare professionals at affordable prices. The expertise acquired through years of hard work has allowed Monobind significant immunoassay market penetration. With a distributor network spanning established and emerging worldwide markets in 110+ countries, Monobind looks forward to an even brighter future. As a global brand and leading manufacturer, our company is a major player in the field of diagnostic immunoassay systems.

Monobind's success can be attributed to the high quality and user friendliness of our product line. Customer care and quality consciousness are the hallmarks of Monobind. Close connections with universities and reference labs allow Monobind to provide the technical support to launch new projects in reduced time frames. Our experience in producing quality raw materials, for our own use and for other diagnostic manufacturers, delivers a sustainable



FDA Registered – ISO 13485 Certified –



Allergy & Anemia	Page
IgE – Immunoglobulin E	7
Ferritin	7
Folate	7
sTfR – Soluble Transferrin Receptor	7
Vitamin B12	7
AutoImmune Thyroid	Page
Anti-Tg – Anti-Thyroglobulin Antigen	8
Anti-TPO – Anti-Thyroperoxidase Antigen	8
Bone Metabolism	Page
Calcitonin	8
PTH Intact – Parathyroid Hormone	8
PTH Whole & Intact – Parathyroid Hormone	8
Vitamin D Direct	8
Cancer Markers	Page
AFP – Alpha-Fetoprotein	9
CA 15-3 Breast Cancer Antigen	9
CA 19-9 Pancreatic Cancer Antigen	9
CA-125 Ovarian Cancer Antigen	9
CEA – Carcinoembryonic Antigen	9
CEA Next Gen – Carcinoembryonic Antigen	10
fβhCG – Free Beta Human Chorionic Gonadotropin	10
tPSA – Total Prostate Specific Antigen	10
tPSA Extra Sensitive – Total Prostate Specific Antigen	10
fPSA – Free Prostate Specific Antigen	10
Cardiac Markers	Page
CKMB – Circulating Creatine Kinase (MB)	11
DIG – Digoxin	11
HS-CRP – High Sensitivity C-Reactive Protein	11
Myoglobin	11
cTnI – Troponin I	11
Diabetes	Page
C-peptide	11
Insulin	12
Endocrine	Page
ACTH – Adrenocorticotrophic Hormone	12
Aldosterone	12
Fertility	Page
AMH – Anti-Müllerian Hormone	12
hCG – Human Chorionic Gonadotropin	12
hCG Extended Range – Human Chorionic Gonadotropin	12
Rapid hCG – Human Chorionic Gonadotropin	13
FSH – Follicitropin	13
LH – Lutropin	13
PAPP-A – Pregnancy Associated Plasma Protein A	13
PRL – Prolactin	13
PRLs – Prolactin Sequential	13

Growth Deficiency	Page
hGH – Human Growth Hormone	14
Infectious Diseases	Page
Anti-H. Pylori IgA	14
Anti-H. Pylori IgG	14
Anti-H. Pylori IgM	14
Anti-SARS-CoV-2 IgA	14
Anti-SARS-CoV-2 IgG	14
Anti-SARS-CoV-2 S1-RBD IgG*	15
Anti-SARS-CoV-2 IgM	15
D-Dimer	15
IL-6 – Interleukin 6	15
PCT – Procalcitonin	15
TORCH	Page
Toxo (Anti-Toxoplasma) IgG*	16
Toxo (Anti-Rubella) IgM*	16
Rubella (Anti-Rubella) IgG*	16
Rubella (Anti-Rubella) IgM*	16
CMV (Anti-Cytomegalovirus) IgG*	16
CMV (Anti-Cytomegalovirus) IgM*	16
HSV 1+2 (Anti-Herpes Simplex Virus 1+2) IgG*	17
HSV 1+2 (Anti-Herpes Simplex Virus 1+2) IgM*	17
Neonatal Thyroid & Adrenal	Page
N-TBG – Neonatal Thyroxine-Binding Globulin*	17
N-TSH – Neonatal Thyrotropin*	17
N-T4 – Neonatal Thyroxine*	17
N-17OHP – 17-Alpha-Hydroxyprogesterone*	17
Steroids	Page
ANST	18
Cortisol	18
DHEA – Dehydroepiandrosterone	18
DHEA-S – Dehydroepiandrosterone Sulfate	18
E1 – Estrone	18
E2 – Estradiol	19
uE3 – Unconjugated Estriol	19
Progesterone	19
17OHP – 17-Hydroxyprogesterone	19
17OHP-SI – 17-Hydroxyprogesterone	19
SHBG – Sex Hormone Binding Globulin	19
Testosterone	20
Free Testosterone	20
Thyroid	Page
TBG – Thyroxine-Binding Globulin	20
Tg – Thyroglobulin	20
TSH – Thyrotropin	20
Rapid TSH – Thyrotropin	21
T3 – Triiodothyronine	21
T3 – T3 Rapid – Triiodothyronine	21
T3 SBS – Triiodothyronine	21
T3U – Triiodothyronine Uptake	21
ft3 – Free Triiodothyronine	22
T4 – Thyroxine	22
T4 – T4 Rapid - Thyroxine	22
T4 SBS – Thyroxine	22
ft4 – Free Thyroxine	22

VAST[®] ELISA & CLIA Kits

A diagnostic first — VAST combination calibrators — deliver the greatest flexibility in assay performance. Labs can measure one (of up to four) analytes per well in a universal plate. Kits available in 192 packs size (as well as 96 for diabetes and prenatal).

Anemia Panel	Page
Folate, Vitamin B12	23
Cancer Panel	Page
AFP, CEA, PSA	23
Diabetes Panel	Page
C-peptide, Insulin	23
Fertility Panel	Page
hCG, FSH, LH, PRLs	24
Prenatal Panel	Page
AFP, hCG, uE ₃	24
Thyroid Panel	Page
T ₃ , T ₄ , TSH	24
FT ₃ , FT ₄ , TSH	24

Sure Controls

General Panel	Page
Multiligand Tri-Level Universal Control	25
Fertility Panel	Page
Maternal Control	26
Thyroid Panel	Page
Anti-Tg & Anti-TPO Control	26
TBG Control	26
Tg Control	26
Other Panels & Dilutants	Page
Anti-H. Pylori (IgA, IgG, IgM) Control	27
Tumor Marker Control	27
Custom Matrix Controls	27
“o” Calibrator Matrices	27

Instruments

Analyzers and Washers	Page
Monobind Plate Wash	28
NeoEldex [®] ELISA Strip Analyzer	29
PrisMatic [®] ELISA Plate Analyzer	30
NeoLumax [®] CLIA Strip Analyzer	31
LuMatic [®] CLIA Plate Analyzer	32
Autoplex G1 Automated ELISA Analyzer	33
Autoplex G2 Automated ELISA & CLIA Analyzer	34
Autoplex G3 Automated ELISA & CLIA Analyzer (Two Plate)	35
TITIN [™] Automated ELISA & CLIA Analyzer (Two Plate)	36
TITIN-s [™] Automated ELISA & CLIA Analyzer (Single Plate)	37

Monobind Immunoassay Benefits

>> Product Stability

Our **thermal stability** allows for short-term (3 days) transit in temperatures of up to 37°C, which is critical for tropical climates and worldwide distribution. The product's shelf life is at least one year from shipment, given that it's stored at 2-8°C after receipt. To ensure stability against a number of adverse conditions, Monobind performs sophisticated **stress testing** on all finished product lots and will not release goods until minimum thresholds are met.

>> Ease of Use

Designed as simple and innovative, Monobind's diagnostic assays enable users to quickly reach reliable results. We utilize **color coding/packaging** to differentiate our products and steps, **liquid reagents** to omit reconstitution, **uniform-testing** procedures and common reagents with many products, and incorporate other leading-edge technologies such as multi-purpose streptavidin plates to deliver user and automation-friendly, quality assays.

>> Cost

Unique among the industry, Monobind manufactures **all essential ingredients** in-house to ensure consistent quality while lowering its cost of goods. A completely **advanced automation system** further reduces cost by increasing production efficiency.

>> Quality

By using **state-of-the-art packaging** such as thermal ID on every product piece and innovative color-coded labeling, we produce an attractive, easy to use assay that's second to none. Our **leading edge assay design** backed by substantial, ongoing R&D efforts represents our fundamental commitment to delivering best-in-class products.

>> ELISA & CLIA Comparison

Item	AccuBind [®] ELISA Microwells	AccuLite [®] CLIA Microwells
Incubation Time	Typical assay times 60 + 15 120 + 15	Typical assay times 45 + 5 60 + 5
Sensitivity	Detection of analyte concentration for TSH 0.025 µIU/ml	Detection of analyte concentration for TSH 0.01 µIU/ml
Dynamic Range	Maximum OD of readers limited to 2.5 - 3.0	Up to 10x greater signal detection than ELISA
Procedure	Consistent steps that fit MB Assays Types (1-8) Classification	Consistent steps that fit MB Assays Types (1-8) Classification
Marketability	Proven technology	State-of-the-art technology may command higher price and reimbursement from government programs
Safety	No radioactive or toxic waste	No radioactive or toxic waste
Shelf Life	Up to 18 Months (12 Guaranteed)	Up to 18 Months (12 Guaranteed)
Reading	450 nm with 620 nm	RLUs

ALLERGY & ANEMIA

IgE	AccuBind [®] ELISA Microwells		AccuLite [®] CLIA Microwells	
	Item			
	IgE (Cat #)	2525-300A (96 wells)		2575-300A (96 wells)
	Method	Enzyme Immunoassay, Colorimetric		Enzyme Immunoassay, Chemiluminescence
	Principle	Streptavidin Biotin Based Sandwich Assay		Streptavidin Biotin Based Sandwich Assay
	Calibrators	0, 5, 25, 50, 150, 400 IU/ml 2nd (IRP 75/502)		0, 5, 25, 50, 150, 400 IU/ml 2nd (IRP 75/502)
	Sample	25 µl		25 µl
	Sensitivity	0.125 IU/ml		0.023 IU/ml
	Total Assay Time	75 min		65 min
Ferritin	AccuBind [®] ELISA Microwells		AccuLite [®] CLIA Microwells	
	Item			
	Ferritin (Cat #)	2825-300A (96 wells)		2875-300A (96 wells)
	Method	Enzyme Immunoassay, Colorimetric		Enzyme Immunoassay, Chemiluminescence
	Principle	Streptavidin Biotin Based Sandwich Assay		Streptavidin Biotin Based Sandwich Assay
	Calibrators	0, 10, 50, 150, 400, 800 ng/ml (3rd IS 94/572)		0, 10, 50, 150, 400, 800 ng/ml (3rd IS 94/572)
	Sample	25 µl		25 µl
	Sensitivity	0.17 ng/ml		0.011 ng/ml
	Total Assay Time	75 min		65 min
Folate	AccuBind [®] ELISA Microwells		AccuLite [®] CLIA Microwells	
	Item			
	Folate (Cat #)	7525-300A (96 wells)		7575-300A (96 wells)
	Method	Enzyme Immunoassay, Colorimetric		Enzyme Immunoassay, Chemiluminescence
	Principle	Streptavidin Biotin Based Sandwich Assay		Streptavidin Biotin Based Sandwich Assay
	Calibrators	0, 1, 2.5, 5, 10, 25 ng/ml		0, 1, 2.5, 5, 10, 25 ng/ml
	Sample	50 µl		50 µl
	Sensitivity	0.52 ng/ml		0.234 ng/ml
	Total Assay Time	65 min		50 min
sTfR	AccuBind [®] ELISA Microwells		AccuLite [®] CLIA Microwells	
	Item			
	Soluble Transferrin Receptor (Cat #)	8625-300A (96 wells)		8675-300A (96 wells)
	Method	Enzyme Immunoassay, Colorimetric		Enzyme Immunoassay, Chemiluminescence
	Principle	Streptavidin Biotin Based Sandwich Assay		Streptavidin Biotin Based Sandwich Assay
	Calibrators	0, 3, 10, 20, 40, 80 nmol/L		0, 3, 10, 20, 40, 80 nmol/L
	Sample	10 µl		10 µl
	Sensitivity	0.055 nmol/ml		0.046 nmol/L
	Total Assay Time	90 min		65 min
Vit B12	AccuBind [®] ELISA Microwells		AccuLite [®] CLIA Microwells	
	Item			
	Vitamin B12 (Cat #)	7625-300A (96 wells)		7675-300A (96 wells)
	Method	Enzyme Immunoassay, Colorimetric		Enzyme Immunoassay, Chemiluminescence
	Principle	Competitive		Competitive
	Calibrators	0, 100, 200, 400, 1000, 2000 pg/ml		0, 100, 200, 400, 1000, 2000 pg/ml
	Sample	50 µl		50 µl
	Sensitivity	70.13 pg/ml		37.92 pg/ml
	Total Assay Time	95 min		80 min

AUTOIMMUNE THYROID

Anti-Tg	AccuBind [®] ELISA Microwells		AccuLite [®] CLIA Microwells	
	Item			
	Anti-Tg (Cat #)	1025-300A (96 wells)		1075-300A (96 wells)
	Method	Enzyme Immunoassay, Colorimetric		Enzyme Immunoassay, Chemiluminescence
	Principle	Streptavidin Biotin Based Sandwich Assay		Streptavidin Biotin Based Sandwich Assay
	Calibrators	0, 50, 125, 500, 1000, 2000 -IU/ml 1st (IRP 65/93)		0, 50, 125, 500, 1000, 2000 IU/ml (IRP 65/93)
	Sample	50 µl (1:100 Dilution)		50 µl (1:100 Dilution)
	Sensitivity	1.94 IU/ml		1.95 IU/ml
	Total Assay Time	105 min		65 min
Anti-TPO	AccuBind [®] ELISA Microwells		AccuLite [®] CLIA Microwells	
	Item			
	Anti-TPO (Cat #)	1125-300A (96 wells)		1175-300A (96 wells)
	Method	Enzyme Immunoassay, Colorimetric		Enzyme Immunoassay, Chemiluminescence
	Principle	Streptavidin Biotin Based Sandwich Assay		Streptavidin Biotin Based Sandwich Assay
	Calibrators	0, 25, 50, 100, 250, 500 IU/ml - (IS 66/387)		0, 25, 50, 100, 250, 500 IU/ml (IS 66/387)
	Sample	25 µl (1:100 Dilution)		25 µl (1:100 Dilution)
	Sensitivity	0.92 IU/ml		1.0 IU/ml
	Total Assay Time	105 min		65 min
Calcitonin	AccuBind [®] ELISA Microwells		AccuLite [®] CLIA Microwells	
	Item			
	Calcitonin (Cat #)	9325-300A (96 wells)		9375-300A (96 wells)
	Method	Enzyme Immunoassay, Colorimetric		Enzyme Immunoassay, Chemiluminescence
	Principle	Sandwich Assay, Antibody-Coated Plate		Sandwich Assay, Antibody-Coated Plate
	Calibrators	0, 10, 40, 150, 400, 1000 pg/ml		0, 10, 40, 150, 400, 1000 pg/ml
	Sample	50 µl		50 µl
	Sensitivity	4.4871 pg/ml		4.4871 pg/ml
	Total Assay Time	80 min		50 min
PTH Intact	AccuBind [®] ELISA Microwells		AccuLite [®] CLIA Microwells	
	Item			
	PTH (Cat #)	9025-300A (96 wells)		9075-300A (96 wells)
	Method	Enzyme Immunoassay, Colorimetric		Enzyme Immunoassay, Chemiluminescence
	Principle	Sandwich Assay, Antibody-Coated Plate		Sandwich Assay, Antibody-Coated Plate
	Calibrators	0, 15, 75, 150, 500, 1000 pg/ml		0, 15, 75, 150, 500, 1000 pg/ml
	Sample	50 µl		50 µl
	Sensitivity	LoB/ LoD 1.39/ 1.50 pg/ml		LoB/ LoD 1.39/ 1.50 pg/ml
	Total Assay Time	80 min		50 min
PTH Whole &	AccuBind [®] ELISA Microwells		AccuLite [®] CLIA Microwells	
	Item			
	PTH (Cat #)	10025-300A (96 wells)		10075-300A (96 wells)
	Method	Enzyme Immunoassay, Colorimetric		Enzyme Immunoassay, Chemiluminescence
	Principle	Sandwich Assay, Antibody-Coated Plate		Sandwich Assay, Antibody-Coated Plate
	Calibrators	0, 15, 75, 150, 500, 1000 pg/ml		0, 15, 75, 150, 500, 1000 pg/ml
	Sample	50 µl		50 µl
	Sensitivity	LoB/ LoD 1.49/ 1.93 pg/ml		LoB/ LoD 1.49/ 1.93 pg/ml
	Total Assay Time	80-95 min (depending on Gen 2/3)		50-65 min (depending Gen2/3)
Vitamin D Direct	AccuBind [®] ELISA Microwells		AccuLite [®] CLIA Microwells	
	Item			
	Vit D Direct (Cat #)	9425-300A (96 wells) 9425-300B (192 wells)		9475-300A (96 wells) 9475-300B (192 wells)
	Method	Enzyme Immunoassay, Colorimetric		Enzyme Immunoassay, Chemiluminescence
	Principle	Competitive Assay, Antibody-Coated Plate		Competitive Assay, Antibody-Coated Plate
	Calibrators	0, 5, 10, 25, 46, 85, 150 ng/ml		0, 5, 10, 25, 46, 85, 150 ng/ml
	Sample	25 µl		25 µl
	Sensitivity	1.14 ng/ml		0.517 ng/ml
	Total Assay Time	80 min		60 min

CANCER MARKERS

AFP	AccuBind [®] ELISA Microwells		AccuLite [®] CLIA Microwells	
	Item			
	AFP (Cat #)	1925-300A (96 wells) 1925-300B (192 wells)	1975-300A (96 wells) 1975-300B (192 wells)	
	Method	Enzyme Immunoassay, Colorimetric	Enzyme Immunoassay, Chemiluminescence	
	Principle	Streptavidin Biotin Based Sandwich Assay	Streptavidin Biotin Based Sandwich Assay	
	Calibrators	0, 5, 25, 50, 250, 500 ng/ml (IRP 72/225)	0, 5, 25, 50, 250, 500 ng/ml (IRP 72/225)	
	Sample	25 µl	25 µl	
	Sensitivity	0.44 ng/ml	0.134 ng/ml	
	Total Assay Time	75 min	50 min	

CA15-3	AccuBind [®] ELISA Microwells		AccuLite [®] CLIA Microwells	
	Item			
	CA 15-3 (Cat#)	5625-300A (96 wells) 5625-300B (192 wells)	5675-300A (96 wells) 5675-300B (192 wells)	
	Method	Enzyme Immunoassay, Colorimetric	Enzyme Immunoassay, Chemiluminescence	
	Principle	Competitive Assay	Competitive Assay	
	Calibrators	0, 10, 40, 100, 200, 400 U/ml	0, 10, 40, 100, 200, 400 U/ml	
	Sample	25 µl	25 µl	
	Sensitivity	0.2 U/ml	0.2 U/ml	
	Total Assay Time	140 min	95 min	

CA 19-9	AccuBind [®] ELISA Microwells		AccuLite [®] CLIA Microwells	
	Item			
	CA-19-9 (Cat #)	3925-300A (96 wells) 3925-300B (192 wells)	3975-300A (96 wells) 3975-300B (192 wells)	
	Method	Enzyme Immunoassay, Colorimetric	Enzyme Immunoassay, Chemiluminescence	
	Principle	Streptavidin Biotin Based Sandwich Assay	Streptavidin Biotin Based Sandwich Assay	
	Calibrators	0, 10, 50, 100, 250, 500 U/ml	0, 10, 50, 100, 250, 500 U/ml	
	Sample	25 µl	25 µl	
	Sensitivity	1.0 U/ml	0.04 U/ml	
	Total Assay Time	135 min	80 min	

CA 125	AccuBind [®] ELISA Microwells		AccuLite [®] CLIA Microwells	
	Item			
	CA-125 (Cat #)	3025-300A (96 wells) 3025-300B (192 wells)	3075-300A (96 wells) 3075-300B (192 wells)	
	Method	Enzyme Immunoassay, Colorimetric	Enzyme Immunoassay, Chemiluminescence	
	Principle	Streptavidin Biotin Based Sandwich Assay	Streptavidin Biotin Based Sandwich Assay	
	Calibrators	0, 15, 50, 100, 200, 400 U/ml	0, 15, 50, 100, 200, 400 U/ml	
	Sample	25 µl	25 µl	
	Sensitivity	1.0 U/ml	0.11 U/ml	
	Total Assay Time	75 min	50 min	

CEA	AccuBind [®] ELISA Microwells		AccuLite [®] CLIA Microwells	
	Item			
	CEA (Cat #)	1825-300A (96 wells) 1825-300B (192 wells)	1875-300A (96 wells) 1875-300B (192 wells)	
	Method	Enzyme Immunoassay, Colorimetric	Enzyme Immunoassay, Chemiluminescence	
	Principle	Streptavidin Biotin Based Sandwich Assay	Streptavidin Biotin Based Sandwich Assay	
	Calibrators	0, 5, 10, 25, 50, 250 ng/ml (IRP 73/601)	0, 5, 10, 25, 50, 250 ng/ml (IRP 73/601)	
	Sample	25 µl	25 µl	
	Sensitivity	1.0 ng/ml	0.5 ng/ml	
	Total Assay Time	75 min	50 min	

CANCER MARKERS cont.

CEA Next Gen	AccuBind [®] ELISA Microwells		AccuLite [®] CLIA Microwells	
	Item			
	CEA Next Gen (Cat #)	4625-300A (96 wells) 4625-300B (192 wells)	4675-300A (96 wells) 4675-300B (192 wells)	
	Method	Enzyme Immunoassay, Colorimetric	Enzyme Immunoassay, Chemiluminescence	
	Principle	Streptavidin Biotin Based Sandwich Assay	Streptavidin Biotin Based Sandwich Assay	
	Calibrators	0, 5, 10, 25, 100, 250 ng/ml (IRP 73/601)	0, 5, 10, 25, 100, 250 ng/ml (IRP 73/601)	
	Sample	25 µl	25 µl	
	Sensitivity	1.0 ng/ml	0.063 ng/ml	
	Total Assay Time	75 min	50 min	

fβhCG	AccuBind [®] ELISA Microwells		AccuLite [®] CLIA Microwells	
	Item			
	Free β-hCG (Cat #)	2025-300A (96 wells)	2075-300A (96 wells)	
	Method	Enzyme Immunoassay, Colorimetric	Enzyme Immunoassay, Chemiluminescence	
	Principle	Streptavidin Biotin Based Sandwich Assay	Streptavidin Biotin Based Sandwich Assay	
	Calibrators	0, 5, 10, 25, 100, 250 ng/ml (IRP 75/551)	0, 5, 10, 25, 100, 250 ng/ml (IRP 75/551)	
	Sample	25 µl	25 µl	
	Sensitivity	0.026 ng/ml	0.00314 ng/ml	
	Total Assay Time	60 min	50 min	

PSA	AccuBind [®] ELISA Microwells		AccuLite [®] CLIA Microwells	
	Item			
	PSA (Cat #)	2125-300A (96 wells) 2125-300B (192 wells)	2175-300A (96 wells) 2175-300B (192 wells)	
	Method	Enzyme Immunoassay, Colorimetric	Enzyme Immunoassay, Chemiluminescence	
	Principle	Streptavidin Biotin Based Sandwich Assay	Streptavidin Biotin Based Sandwich Assay	
	Calibrators	0, 5, 10, 25, 50, 100 ng/ml 1st (IS 96/670)	0, 5, 10, 25, 50, 100 ng/ml (IS 96/670)	
	Sample	25 µl	25 µl	
	Sensitivity	0.013 ng/ml	0.006 ng/ml	
	Total Assay Time	45 min	35 min	

PSA Extra Sensitive	AccuBind [®] ELISA Microwells		AccuLite [®] CLIA Microwells	
	Item			
	PSA XS (Cat #)	8725-300A (96 wells) 8725-300B (192 wells)	8775-300A (96 wells) 8775-300B (192 wells)	
	Method	Enzyme Immunoassay, Colorimetric	Enzyme Immunoassay, Chemiluminescence	
	Principle	Streptavidin Biotin Based Sandwich Assay	Streptavidin Biotin Based Sandwich Assay	
	Calibrators	0, 1, 2.5, 5, 10, 25 ng/ml (IS 96/670)	0, 1, 2.5, 5, 10, 25 ng/ml (IS 96/670)	
	Sample	25 µl	25 µl	
	Sensitivity	4.72 pg/ml	1.1 pg/ml	
	Total Assay Time	45 min	35 min	

fPSA	AccuBind [®] ELISA Microwells		AccuLite [®] CLIA Microwells	
	Item			
	fPSA (Cat #)	2325-300A (96 wells) 2325-300B (192 wells)	2375-300A (96 wells) 2375-300B (192 wells)	
	Method	Enzyme Immunoassay, Colorimetric	Enzyme Immunoassay, Chemiluminescence	
	Principle	Streptavidin Biotin Based Sandwich Assay	Streptavidin Biotin Based Sandwich Assay	
	Calibrators	0, 0.5, 1, 2.5, 5, 10 ng/ml (1st IS 96/668)	0, 0.5, 1, 2.5, 5, 10 ng/ml (1st IS 96/668)	
	Sample	50 µl	50 µl	
	Sensitivity	0.008 ng/ml	0.015 ng/ml	
	Total Assay Time	75 min	50 min	

CARDIAC MARKERS

CKMB	AccuBind [®] ELISA Microwells			AccuLite [®] CLIA Microwells		
	Item			Item		
	CK-MB (Cat #)	2925-300A (96 wells) 2925-300B (192 wells)		2975-300A (96 wells) 2975-300B (192 wells)		
	Method Principle Calibrators Sample Sensitivity Total Assay Time	Enzyme Immunoassay, Colorimetric Streptavidin Biotin Based Sandwich Assay 0, 5, 25, 100, 200, 400 ng/ml 25 µl 0.182 ng/ml 30 min		Enzyme Immunoassay, Chemiluminescence Streptavidin Biotin Based Sandwich Assay 0, 5, 25, 100, 200, 400 ng/ml 25 µl 0.5 ng/ml 30 min		
Digoxin	AccuBind [®] ELISA Microwells			AccuLite [®] CLIA Microwells		
	Item			Item		
	Digoxin (Cat #)	925-300A (96 wells)		975-300A (96 wells)		
	Method Principle Calibrators Sample Sensitivity Total Assay Time	Enzyme Immunoassay, Colorimetric Competitive Assay 0, 0.25, 0.5, 1, 2, 4 ng/ml 25 µl 0.072 ng/ml 45 min		Enzyme Immunoassay, Chemiluminescence Competitive Assay 0, 0.25, 0.5, 1, 2, 4 ng/ml 25 µl 0.169 ng/ml 35 min		
HS-CRP	AccuBind [®] ELISA Microwells			AccuLite [®] CLIA Microwells		
	Item			Item		
	HS-CRP (Cat #)	3125-300A (96 wells)		3175-300A (96 wells)		
	Method Principle Calibrators Sample Sensitivity Total Assay Time	Enzyme Immunoassay, Colorimetric Streptavidin Biotin Based Sandwich Assay 0, 0.5, 2.0, 5, 15, 30 µg/ml (CRM-470) 25 µl 0.014 µg/ml 30 min		Enzyme Immunoassay, Chemiluminescence Streptavidin Biotin Based Sandwich Assay 0, 0.5, 2.0, 5, 15, 30 µg/ml (CRM-470) 25 µl 0.007 µg/ml 20 min		
Myoglobin	AccuBind [®] ELISA Microwells			AccuLite [®] CLIA Microwells		
	Item			Item		
	Myoglobin (Cat #)	3225-300A (96 wells) 3225-300B (192 wells)		3275-300A (96 wells) 3275-300B (192 wells)		
	Method Principle Calibrators Sample Sensitivity Total Assay Time	Enzyme Immunoassay, Colorimetric Streptavidin Biotin Based Sandwich Assay 0, 10, 25, 50, 150, 400 ng/ml 25 µl 0.178 ng/ml 30 min		Enzyme Immunoassay, Chemiluminescence Streptavidin Biotin Based Sandwich Assay 0, 10, 25, 50, 150, 400 ng/ml 25 µl 0.03 ng/ml 20 min		
cTnl	AccuBind [®] ELISA Microwells			AccuLite [®] CLIA Microwells		
	Item			Item		
	cTnl (Cat #)	3825-300A (96 wells) 3825-300B (192 wells)		3875-300A (96 wells) 3875-300B (192 wells)		
	Method Principle Calibrators Sample Sensitivity Total Assay Time	Enzyme Immunoassay, Colorimetric Sandwich Assay, Antibody-Coated Plate 0, 0.4, 1.25, 2.5, 7.5, 20 ng/ml 25 µl LoB/ LoD 0.0639/ 0.0759 ng/ml 30 min		Enzyme Immunoassay, Chemiluminescence Sandwich Assay, Antibody-Coated Plate 0, 0.4, 1.25, 2.5, 7.5, 20 ng/ml 25 µl LoB 0.0304/ LoD 0.0853 ng/ml 20 min		

DIABETES

C-Peptide	AccuBind [®] ELISA Microwells			AccuLite [®] CLIA Microwells		
	Item			Item		
	C-Peptide(Cat #)	2725-300A (96 wells) 2725-300B (192 wells)		2775-300A (96 wells) 2775-300B (192 wells)		
	Method Principle Calibrators Sample Sensitivity Total Assay Time	Enzyme Immunoassay, Colorimetric Streptavidin Biotin Based Sandwich Assay 0, 0.2, 1, 2, 5, 10 ng/ml 1st (IRP 84/510) 50 µl 0.020 ng/ml 135 min		Enzyme Immunoassay, Chemiluminescence Streptavidin Biotin Based Sandwich Assay 0, 0.2, 1, 2, 5, 10 ng/ml 1st (IRP 84/510) 50 µl 0.012 ng/ml 65 min		

DIABETES cont.

Insulin	AccuBind [®] ELISA Microwells			AccuLite [®] CLIA Microwells		
	Item			Item		
	Insulin (Cat #) Rapid Insulin*	2425-300A (96 wells) 2425-300B (192 wells) 5825-300A* (96 wells)		2475-300A (96 wells) 2475-300B (192 wells)		
	Method Principle Calibrators Sample Sensitivity Total Assay Time	Enzyme Immunoassay, Colorimetric Streptavidin Biotin Based Sandwich Assay 0, 5, 25, 50, 100, 300 µIU/ml 1st (IRP 66/304) 50 µl 0.182 µIU/ml 135 min	0.75 µIU/ml* 75 min*	Enzyme Immunoassay, Chemiluminescence Streptavidin Biotin Based Sandwich Assay 0, 5, 25, 50, 100, 300 µIU/ml 1st (IRP 66/304) 50 µl 0.114 µIU/ml 65 min		
ACTH	AccuBind [®] ELISA Microwells			AccuLite [®] CLIA Microwells		
	Item			Item		
	Insulin (Cat #)	10625-300A (96 wells)		10675-300A (96 wells)		
	Method Principle Calibrators Sample Sensitivity Total Assay Time	Enzyme Immunoassay, Colorimetric Sandwich Assay, Antibody-Coated Plate 0, 20, 100, 250, 750, 2000 pg/ml 50 µl LoB/ LoD 0.054/ 0.095 pg/ml 80 min		Enzyme Immunoassay, Chemiluminescence Sandwich Assay, Antibody-Coated Plate 0, 20, 100, 250, 750, 2000 pg/ml 50 µl LoB/ LoD 0.054/ 0.095 pg/ml 50 min		
Aldosterone	AccuBind [®] ELISA Microwells			AccuLite [®] CLIA Microwells		
	Item			Item		
	Insulin (Cat #)	10125-300A (96 wells)		10175-300A (96 wells))		
	Method Principle Calibrators Sample Sensitivity Total Assay Time	Enzyme Immunoassay, Colorimetric Streptavidin Biotin Based Sandwich Assay 0, 25, 125, 250, 500, 1500 pg/ml 25 µl LoB/ LoD 14.39/ 22.18 pg/ml 80 min		Enzyme Immunoassay, Chemiluminescence Streptavidin Biotin Based Sandwich Assay 0, 25, 125, 250, 500, 1500 pg/ml 25 µl LoB/ LoD 15.36/ 19.65 pg/ml 65 min		
AMH	AccuBind [®] ELISA Microwells			AccuLite [®] CLIA Microwells		
	Item			Item		
	hCG (Cat #)	9725-300A (96 wells)		9775-300A (96 wells)		
	Method Principle Calibrators Sample Sensitivity Total Assay Time	Enzyme Immunoassay, Colorimetric Competitive Assay, Antibody-Coated Plate 0, 0.2, 0.5, 1.0, 5, 15 ng/ml 50 µl LoB/ LoD 0.024/ 0.045 ng/ml 80 min		Enzyme Immunoassay, Chemiluminescence Competitive Assay, Antibody-Coated Plate 0, 0.2, 0.5, 1.0, 5, 15 ng/ml 50 µl LoB/ LoD 0.0069/ 0.035 ng/ml 65 min		
hCG	AccuBind [®] ELISA Microwells			AccuLite [®] CLIA Microwells		
	Item			Item		
	hCG (Cat #)	825-300A (96 wells) 825-300B (192 wells)		875-300A (96 wells) 875-300B (192 wells)		
	Method Principle Calibrators Sample Sensitivity Total Assay Time	Enzyme Immunoassay, Colorimetric Streptavidin Biotin Based Sandwich Assay 0, 5, 25, 50, 100, 250 mIU/ml (3rd IS 75/537) 25 µl 0.102 mIU/ml 75 min		Enzyme Immunoassay, Chemiluminescence Streptavidin Biotin Based Sandwich Assay 0, 5, 25, 50, 100, 250 mIU/ml (3rd IS 75/537) 25 µl 0.016 mIU/ml 50 min		
hCG Extended Range	AccuBind [®] ELISA Microwells			AccuLite [®] CLIA Microwells		
	Item			Item		
	hCG XR (Cat #)	8825-300A (96 wells) 8825-300B (192 wells)		8875-300A (96 wells) 8875-300B (192 wells)		
	Method Principle Calibrators Sample Sensitivity Total Assay Time	Enzyme Immunoassay, Colorimetric Streptavidin Biotin Based Sandwich Assay 0, 5, 25, 100, 250, 1,000 mIU/ml (3rd IS 75/537) 25 µl 0.332 mIU/ml 35 min		Enzyme Immunoassay, Chemiluminescence Streptavidin Biotin Based Sandwich Assay 0, 5, 25, 100, 250, 1,000 mIU/ml (3rd IS 75/537) 25 µl 0.182 mIU/ml 25 min		

Rapid hCG	AccuBind [®] ELISA Microwells	
	Item	
	RhCG (Cat #)	3325-300A (96 wells) 3325-300B (192 wells)
	Method Principle	Enzyme Immunoassay, Colorimetric
	Calibrators	Streptavidin Biotin Based Sandwich Assay 0, 25, 50, 100, 250 mIU/ml (3rd IS 75/537)
	Sample	25 µl
	Sensitivity	2.5 mIU/ml
	Total Assay Time	15 min
FSH	AccuBind [®] ELISA Microwells	
	Item	
	FSH (Cat #)	425-300A (96 wells) 425-300B (192 wells)
	Method Principle	Enzyme Immunoassay, Colorimetric
	Calibrators	Streptavidin Biotin Based Sandwich Assay 0, 5, 10, 25, 50, 100 mIU/ml (2nd IRP 78/549)
	Sample	50 µl
	Sensitivity	0.134 mIU/ml
	Total Assay Time	75 min
LH	AccuBind [®] ELISA Microwells	
	Item	
	LH (Cat #)	625-300A (96 wells) 625-300B (192 wells)
	Method Principle	Enzyme Immunoassay, Colorimetric
	Calibrators	Streptavidin Biotin Based Sandwich Assay 0, 5, 25, 50, 100, 200 mIU/ml (2nd IS 80/552)
	Sample	50 µl
	Sensitivity	0.054 mIU/ml
	Total Assay Time	75 min
PAPP-A	AccuBind [®] ELISA Microwells	
	Item	
	PAPP-A (Cat #)	12625-300A (96 wells)
	Method Principle	Enzyme Immunoassay, Colorimetric
	Calibrators	Streptavidin Biotin Based Sandwich Assay 0, 0.64, 1.6, 3.2, 9.6, 32 µg/ml
	Sample	10 µl
	Sensitivity	0.125 µg/ml
	Total Assay Time	110 min
PRL	AccuBind [®] ELISA Microwells	
	Item	
	PRL (Cat #)	725-300A (96 wells) 725-300B (192 wells)
	Method Principle	Enzyme Immunoassay, Colorimetric
	Calibrators	Streptavidin Biotin Based Sandwich Assay 0, 5, 10, 25, 50, 100 ng/ml (3rd IS 84/500)
	Sample	25 µl
	Sensitivity	0.150 ng/ml
	Total Assay Time	75 min
PRLs	AccuBind [®] ELISA Microwells	
	Item	
	PRLs (Cat #)	4425-300A
	Method Principle	Enzyme Immunoassay, Colorimetric
	Calibrators	Streptavidin Biotin Based Sandwich Assay 0, 10, 25, 50, 100, 250 ng/ml (3rd IS 84/50)
	Sample	25 µl
	Sensitivity	0.8 ng/ml
	Total Assay Time	75 min



AccuLite[®]
CLIA Microwells

AccuLite[®]
CLIA Microwells

AccuLite[®]
CLIA Microwells

AccuLite[®]
CLIA Microwells

AccuLite[®]
CLIA Microwells

hGH	AccuBind [®] ELISA Microwells	
	Item	
	hGH (Cat #)	1725-300A (96 wells) 1725-300B (192 wells)
	Method Principle	Enzyme Immunoassay, Colorimetric
	Calibrators	Streptavidin Biotin Based Sandwich Assay 0, 2, 10, 25, 50, 150 µIU/ml (2nd IS 98/574)
	Sample	50 µl
	Sensitivity	0.104 µIU/ml
	Total Assay Time	75 min
X-h Pylori IgA	AccuBind [®] ELISA Microwells	
	Item	
	Anti-H. Pylori IgA	1625-300A (96 wells)
	Method Principle	Enzyme Immunoassay, Colorimetric
	Calibrators	Streptavidin Biotin Based Sandwich Assay 0, 10, 25, 50, 100 U/ml * (Lot Specific)
	Sample	50 µl (1:100 Dilution)
	Sensitivity	0.304 U/ml
	Total Assay Time	105 min
X-h Pylori IgG	AccuBind [®] ELISA Microwells	
	Item	
	Anti-H. Pylori IgG	1425-300A (96 wells)
	Method Principle	Enzyme Immunoassay, Colorimetric
	Calibrators	Streptavidin Biotin Based Sandwich Assay 0, 10, 25, 50, 100 U/ml * (Lot Specific)
	Sample	25 µl (1:100 Dilution)
	Sensitivity	0.1424 U/ml
	Total Assay Time	105 min
X-h Pylori IgM	AccuBind [®] ELISA Microwells	
	Item	
	Anti-H. Pylori IgM	1525-300A (96 wells)
	Method Principle	Enzyme Immunoassay, Colorimetric
	Calibrators	Streptavidin Biotin Based Sandwich Assay 0, 10, 25, 50, 100 U/ml * (Lot Specific)
	Sample	50 µl (1:100 Dilution)
	Sensitivity	0.065 U/ml
	Total Assay Time	105 min
x-SARS-CoV-2 IgA	AccuBind [®] ELISA Microwells	
	Item	
	Anti-SARS-CoV-2 IgA (Cat #)	11825-300A (96 wells)
	Method Principle	Enzyme Immunoassay, Colorimetric
	Control	Sandwich Assay, Antigen-Coated Plate Positive, Negative, Cutoff (Ready to Use)I
	Sample	100 µl
	Sensitivity	86.60%
	Total Assay Time	75 min
x-SARS-CoV-2 IgG	AccuBind [®] ELISA Microwells	
	Item	
	Anti-SARS-CoV-2 IgG Cat #	11925-300A (96 wells)
	Method Principle	Enzyme Immunoassay, Colorimetric
	Control	Sandwich Assay, Antigen-Coated Plate Positive, Negative, Cutoff (Ready to Use)
	Sample	100 µl
	Sensitivity	96.60%
	Total Assay Time	75 min

AccuLite[®]
CLIA Microwells

AccuLite[®]
CLIA Microwells

AccuLite[®]
CLIA Microwells

AccuLite[®]
CLIA Microwells

AccuLite[®]
CLIA Microwells

AccuLite[®]
CLIA Microwells

INFECTIOUS DISEASES cont.

x-SARS-CoV-2 S1-RBD IgG	AccuBind [®] ELISA Microwells	
	Item	
	x-SARS-CoV-2 S1-RBD IgG	12525-300A (96 wells)
	Method Principle Control Sample Sensitivity Total Assay Time	Enzyme Immunoassay, Colorimetric Sandwich Assay, Antigen-Coated Plate Positive, Negative, Cutoff (Ready to Use) 100 µl 98.3% 75 min

x-SARS-CoV-2 IgM	AccuBind [®] ELISA Microwells		AccuLite [®] CLIA Microwells	
	Item			
	Anti-SARS-CoV-2 IgM Cat #	11725-300A (96 wells)		11775-300A (96 wells)
	Method Principle Control Sample Sensitivity Total Assay Time	Enzyme Immunoassay, Colorimetric Sandwich Assay, Antibody-Coated Plate Positive, Negative, Cutoff (Ready to Use) 100 µl 83.30% 75 min		Enzyme Immunoassay, Chemiluminescence Sandwich Assay, Antibody-Coated Plate Positive, Negative, Cutoff (Ready to Use) 100 µl 83.30% 65 min

D-Dimer	AccuBind [®] ELISA Microwells		AccuLite [®] CLIA Microwells	
	Item			
	D-Dimer Cat #	12025-300A (96 wells)		12075-300A (96 wells)
	Method Principle Calibrators Sample Sensitivity Total Assay Time	Enzyme Immunoassay, Colorimetric Sandwich Assay, Antibody-Coated Plate 0, 100, 400, 1,500, 4,000, 10,000 ng/ml 50 µl 4.4871 pg/ml 105 min		Enzyme Immunoassay, Chemiluminescence Sandwich Assay, Antibody-Coated Plate 0, 100, 400, 1,500, 4,000, 10,000 ng/ml 50 µl 4.4871 pg/ml 95 min

IL-6	AccuBind [®] ELISA Microwells		AccuLite [®] CLIA Microwells	
	Item			
	Interleukin 6 Cat #	13225-300A (96 wells)		13275-300A (96 wells)
	Method Principle Calibrators Sample Sensitivity Total Assay Time	Enzyme Immunoassay, Colorimetric Sandwich Assay, Antibody-Coated Plate 0, 10, 50, 150, 400, 1000 pg/ml 50 µl 0.9 pg/ml 80 min		Enzyme Immunoassay, Chemiluminescence Sandwich Assay, Antibody-Coated Plate 0, 10, 50, 150, 400, 1000 pg/ml 50 µl 0.9 pg/ml 50 min

Procalcitonin	AccuBind [®] ELISA Microwells		AccuLite [®] CLIA Microwells	
	Item			
	PCT (Cat #)	9225-300A (96 wells)		9275-300A (96 wells)
	Method Principle Calibrators Sample Sensitivity Total Assay Time	Enzyme Immunoassay, Colorimetric Streptavidin Biotin Based Sandwich Assay 0, 0.5, 1.0, 2.5, 10, 25 ng/ml 50 µl LoB/ LoD 0.024/ 0.05 ng/ml 45 min		Enzyme Immunoassay, Chemiluminescence Streptavidin Biotin Based Sandwich Assay 0, 0.5, 1.0, 2.5, 10, 25 ng/ml 50 µl LoB/ LoD 0.024/ 0.05 ng/ml 35 min

TORCH



Toxo IgG	AccuBind [®] ELISA Microwells	
	Item	
	Anti-Toxoplasma IgG Cat #	6125-300A (96 wells)
	Method Principle Control Sample Sensitivity Total Assay Time	Enzyme Immunoassay, Colorimetric Sandwich Assay, Antigen-Coated Plate Positive, Negative, Cutoff (Ready to Use) 100 µl 99% 75 min

Toxo IgM	AccuBind [®] ELISA Microwells	
	Item	
	Anti-Toxoplasma IgM Cat #	6225-300A (96 wells)
	Method Principle Control Sample Sensitivity Total Assay Time	Enzyme Immunoassay, Colorimetric Sandwich Assay, Antigen-Coated Plate Positive, Negative, Cutoff (Ready to Use) 100 µl TBD% 75 min

Rubella IgG	AccuBind [®] ELISA Microwells	
	Item	
	Anti-Rubella IgG Cat #	6325-300A (96 wells)
	Method Principle Control Sample Sensitivity Total Assay Time	Enzyme Immunoassay, Colorimetric Sandwich Assay, Antigen-Coated Plate Positive, Negative, Cutoff (Ready to Use) 100 µl 98.8% 75 min

Rubella IgM	AccuBind [®] ELISA Microwells	
	Item	
	Anti-Rubella IgM Cat #	6425-300A (96 wells)
	Method Principle Control Sample Sensitivity Total Assay Time	Enzyme Immunoassay, Colorimetric Sandwich Assay, Antigen-Coated Plate Positive, Negative, Cutoff (Ready to Use) 100 µl TBD% 75 min

CMV IgG	AccuBind [®] ELISA Microwells	
	Item	
	Anti-CMV IgG Cat #	6525-300A (96 wells)
	Method Principle Control Sample Sensitivity Total Assay Time	Enzyme Immunoassay, Colorimetric Sandwich Assay, Antigen-Coated Plate Positive, Negative, Cutoff (Ready to Use) 100 µl 99% 75 min

CMV IgM	AccuBind [®] ELISA Microwells	
	Item	
	Anti-CMV IgM Cat #	6625-300A (96 wells)
	Method Principle Control Sample Sensitivity Total Assay Time	Enzyme Immunoassay, Colorimetric Sandwich Assay, Antigen-Coated Plate Positive, Negative, Cutoff (Ready to Use) 100 µl TBD% 75 min

HSV 1+2 IgG	AccuBind [®] ELISA Microwells	
	Item	
	Anti-HSV 1+2 IgG Cat #	6725-300A (96 wells)
	Method Principle Control Sample Sensitivity Total Assay Time	Enzyme Immunoassay, Colorimetric Sandwich Assay, Antigen-Coated Plate Positive, Negative, Cutoff (Ready to Use) 100 µl 85.4% 75 min

HSV 1+2 IgM	AccuBind [®] ELISA Microwells	
	Item	
	Anti-HSV 1+2 IgM Cat #	6825-300A (96 wells)
	Method Principle Control Sample Sensitivity Total Assay Time	Enzyme Immunoassay, Colorimetric Sandwich Assay, Antigen-Coated Plate Positive, Negative, Cutoff (Ready to Use) 100 µl TBD% 75 min

NEONATAL THYROID

N-TBG	AccuBind [®] ELISA Microwells	
	Item	
	NTBG (Cat #)	8925-300A (96 wells) 8925-300B (192 wells)
	Method Principle Calibrators Sample Sensitivity Total Assay Time	Enzyme Immunoassay, Colorimetric Competitive Assay 0-750 nmol/L (Lot Specific) Dried blood spots on S&S 903 paper 1/8" Dot 28.6 nmol/L 2.25 hrs

N-TSH	AccuBind [®] ELISA Microwells	
	Item	
	NTSH (Cat #)	3425-300A (96 wells) 3425-300B (192 wells) 3425-300D (480 wells) 3425-300E (960 wells) 3425-300F (1920 wells)
	Method Principle Calibrators Sample Sensitivity Total Assay Time	Enzyme Immunoassay, Colorimetric Streptavidin Biotin Based Sandwich Assay 0 - 250 uIU/ml (Lot Specific) (2nd IRP 80/558) Dried blood spots on S&S 903 paper 1/8" dot 1.0 uIU/ml 3 hrs

N-T4	AccuBind [®] ELISA Microwells	
	Item	
	NT4 (Cat #)	2625-300A (96 wells) 2625-300B (192 wells) 2625-300D (480 wells) 2625-300E (960 wells) 2625-300F (1920 wells)
	Method Principle Calibrators Sample Sensitivity Total Assay Time	Enzyme Immunoassay, Colorimetric Competitive Assay 0-25 µg/dl (Lot Specific) Dried blood spots on S&S 903 paper 1/8" Dot 1.1 µg/dl 2.5 hrs

N-17OHP	AccuBind [®] ELISA Microwells	
	Item	
	N17OHP (Cat #)	5525-300A (96 wells) 5525-300B (192 wells)
	Method Principle Calibrators Sample Sensitivity Total Assay Time	Enzyme Immunoassay, Colorimetric Competitive Assay 0-105 ng/ml (Lot Specific) Dried blood spots on S&S 903 Paper 1/8" dot 0.56 ng/ml 2.25 Hours

STERIODS

ANST	AccuBind [®] ELISA Microwells		AccuLite [®] CLIA Microwells
	Item		
	Cortisol (Cat #)	12425-300A (96 wells)	12475-300A (96 wells)
	Method Principle Calibrators Sample Sensitivity Total Assay Time	Enzyme Immunoassay, Colorimetric Competitive Assay, Antibody-Coated Plate 0, 0.1, 0.3, 1, 3, 10 ng/ml 25 µl LoB 0.025 ng/ml 80 min	Enzyme Immunoassay, Chemiluminescence Competitive Assay, Antibody-Coated Plate 0, 0.1, 0.3, 1, 3, 10 ng/ml 25 µl LoB 0.025 ng/ml 50 min

Cortisol	AccuBind [®] ELISA Microwells		AccuLite [®] CLIA Microwells
	Item		
	Cortisol (Cat #)	3625-300A (96 wells)	3675-300A (96 wells)
	Method Principle Calibrators Sample Sensitivity Total Assay Time	Enzyme Immunoassay, Colorimetric Streptavidin Biotin Based Competitive Assay 0, 1, 4, 10, 20, 50 µg/dl 25 µl 0.366 µg/dl 75 min	Enzyme Immunoassay, Chemiluminescence Streptavidin Biotin Based Competitive Assay 0, 1, 4, 10, 20, 50 µg/dl 25 µl 0.270 µg/dl 50 min

DHEA	AccuBind [®] ELISA Microwells		AccuLite [®] CLIA Microwells
	Item		
	DHEA (Cat #)	7425-300A (96 wells)	7475-300A (96 wells)
	Method Principle Calibrators Sample Sensitivity Total Assay Time	Enzyme Immunoassay, Colorimetric Competitive Assay 0, 0.5, 2, 5, 10, 30 ng/ml 25 µl 0.10 ng/ml 80 min	Enzyme Immunoassay, Chemiluminescence Competitive Assay 0, 0.5, 2, 5, 10, 30 ng/ml 25 µl 0.15 ng/ml 65 min

DHEA-S	AccuBind [®] ELISA Microwells		AccuLite [®] CLIA Microwells
	Item		
	DHEA-S (Cat #)	5125-300A (96 wells)	5175-300A (96 wells)
	Method Principle Calibrators Sample Sensitivity Total Assay Time	Enzyme Immunoassay, Colorimetric Competitive Assay 0, 0.2, 1, 2, 4, 8 µg/ml 10 µl 0.042 µg/ml 45 min	Enzyme Immunoassay, Chemiluminescence Competitive Assay 0, 0.2, 1, 2, 4, 8 µg/ml 10 µl 0.09 µg/ml 35 min

E1	AccuBind [®] ELISA Microwells		AccuLite [®] CLIA Microwells
	Item		
	E1 (Cat #)	10325-300A (96 wells)	10375-300A (96 wells)
	Method Principle Calibrators Sample Sensitivity Total Assay Time	Enzyme Immunoassay, Colorimetric Competitive Assay 0, 15, 30, 100, 300, 1000 pg/ml 25 µl LoB/ LoD 6.03/ 10.68 pg/ml 65 min	Enzyme Immunoassay, Chemiluminescence Competitive Assay 0, 15, 30, 100, 300, 1000 pg/ml 25 µl LoB/ LoD 6.03/ 10.68 pg/ml 50 min

STEROIDS cont.

E2	AccuBind [®] ELISA Microwells		AccuLite [®] CLIA Microwells	
	Item			
	E2 (Cat #)	4925-300A (96 wells)		4975-300A (96 wells)
	Method Principle Calibrators Sample Sensitivity Total Assay Time	Enzyme Immunoassay, Colorimetric Competitive Assay 0, 20, 100, 250, 500, 1500 & 3000 pg/ml 25 µl 8.2 pg/ml 140 min		Enzyme Immunoassay, Chemiluminescence Competitive Assay 0, 20, 100, 250, 500, 1500 & 3000 pg/ml 25 µl 4.162 pg/ml 95 min
uE3	AccuBind [®] ELISA Microwells		AccuLite [®] CLIA Microwells	
	Item			
	uE3 (Cat #)	5025-300A (96 wells)		5075-300A (96 wells)
	Method Principle Calibrators Sample Sensitivity Total Assay Time	Enzyme Immunoassay, Colorimetric Competitive Assay 0, 0.4, 2.0, 5, 15 & 30 ng/ml 25 µl 0.115 ng/ml 75 min		Enzyme Immunoassay, Chemiluminescence Competitive Assay 0, 0.4, 2.0, 5, 15 & 30 ng/ml 25 µl 0.237 ng/ml 50 min
Progesterone	AccuBind [®] ELISA Microwells		AccuLite [®] CLIA Microwells	
	Item			
	Progesterone (Cat #)	4825-300A (96 wells)		4875-300A (96 wells)
	Method Principle Calibrators Sample Sensitivity Total Assay Time	Enzyme Immunoassay, Colorimetric Competitive Assay 0, 0.3, 2, 5, 15, 30 and 60 ng/ml 25 µl 0.105 ng/ml 80 min		Enzyme Immunoassay, Chemiluminescence Competitive Assay 0, 0.3, 2, 5, 15, 30 and 60 ng/ml 25 µl 0.208 ng/ml 65 min
17OHP	AccuBind [®] ELISA Microwells		AccuLite [®] CLIA Microwells	
	Item			
	17OHP (Cat #)	5225-300A (96 wells)		5275-300A (96 wells)
	Method Principle Calibrators Sample Sensitivity Total Assay Time	Enzyme Immunoassay, Colorimetric Competitive Assay 0, 0.1, 0.5, 1.0, 2.5, 10 ng/ml 25 µl 0.077 ng/ml 80 min.		Enzyme Immunoassay, Chemiluminescence Competitive Assay 0, 0.1, 0.5, 1.0, 2.5, 10 ng/ml 25 µl 0.040 ng/ml 50 min
17OHP-SI	AccuBind [®] ELISA Microwells		AccuLite [®] CLIA Microwells	
	Item			
	17OHP-SI (Cat #)	9925-300A (96 wells)		9975-300A (96 wells)
	Method Principle Calibrators Sample Sensitivity Total Assay Time	Enzyme Immunoassay, Colorimetric Competitive 0, 0.1, 0.5, 1.0, 5, 10, 20 ng/ml 25 µl 0.03 ng/ml 80 min.		Enzyme Immunoassay, Chemiluminescence Competitive 0, 0.1, 0.5, 1.0, 5, 10, 20 ng/ml 25 µl 0.03 ng/ml 50 min
SHBG	AccuBind [®] ELISA Microwells		AccuLite [®] CLIA Microwells	
	Item			
	SHBG (Cat #)	9125-300A (96 wells)		9175-300A (96 wells)
	Method Principle Calibrators Sample Sensitivity Total Assay Time	Enzyme Immunoassay, Colorimetric Streptavidin Biotin Based Sandwich Assay 0, 10, 25, 50, 100, 250 nmol/L (2nd IS 08/266) 25 µl 0.0122 nmol/L 45 min		Enzyme Immunoassay, Chemiluminescence Streptavidin Biotin Based Sandwich Assay 0, 10, 25, 50, 100, 250 nmol/L (2nd IS 08/266) 25 µl 0.0132 nmol/L 35 min

STEROIDS cont.

Testosterone	AccuBind [®] ELISA Microwells		AccuLite [®] CLIA Microwells	
	Item			
	Testosterone (Cat #)	3725-300A (96 wells)		3775-300A (96 wells)
	Method Principle Calibrators Sample Sensitivity Total Assay Time	Enzyme Immunoassay, Colorimetric Streptavidin Biotin Based Competitive Assay 0, 0.1, 0.5, 1, 2.5, 5, 12 ng/ml 10 µl 0.0576 ng/ml 75 min		Enzyme Immunoassay, Chemiluminescence Streptavidin Biotin Based Competitive Assay 0, 0.1, 0.5, 1, 2.5, 5, 12 ng/ml 10 µl 0.0371 ng/ml 50 min
Free Testosterone	AccuBind [®] ELISA Microwells		AccuLite [®] CLIA Microwells	
	Item			
	Free Testosterone (Cat #)	5325-300A (96 wells)		5375-300A (96 wells)
	Method Principle Calibrators Sample Sensitivity Total Assay Time	Enzyme Immunoassay, Colorimetric Streptavidin Biotin Based Competitive Assay 0, 0.2, 1, 2.5, 7.5, 20, 60 pg/ml 20 µl LoB/ LoD 0.0295/ 0.0519 pg/ml 75 min		Enzyme Immunoassay, Chemiluminescence Streptavidin Biotin Based Competitive Assay 0, 0.2, 1, 2.5, 7.5, 20, 60 pg/ml 20 µl 0.120 pg/ml 50 min
TBG	AccuBind [®] ELISA Microwells		AccuLite [®] CLIA Microwells	
	Item			
	TBG (Cat #)	3525-300A (96 wells) 3525-300B (192 wells)		3575-300A (96 wells) 3575-300B (192 wells)
	Method Principle Calibrators Sample Sensitivity Total Assay Time	Enzyme Immunoassay, Colorimetric Streptavidin Biotin Based Sandwich Assay 1, 4, 8, 16, 32, 64 µg/ml (IS 88/638) 10 µl 1.0 µg/ml 45 min		Enzyme Immunoassay, Chemiluminescence Streptavidin Biotin Based Sandwich Assay 1, 4, 8, 16, 32, 64 µg/ml (IS 88/638) 10 µl 1.0 µg/ml 35 min
Tg	AccuBind [®] ELISA Microwells		AccuLite [®] CLIA Microwells	
	Item			
	Tg (Cat #)	2225-300A (96 wells)		2275-300A (96 wells)
	Method Principle Calibrators Sample Sensitivity Total Assay Time	Enzyme Immunoassay, Colorimetric Streptavidin Biotin Based Sandwich Assay 0, 2.0, 10, 40, 100, 250 ng/ml 50 µl 0.44 ng/ml Long Procedure 255 min/ Short 135 min		Enzyme Immunoassay, Chemiluminescence Streptavidin Biotin Based Sandwich Assay 0, 2.0, 10, 40, 100, 250 ng/ml 50 µl 0.031 ng/ml Long Procedure 245 min/ Short 125 min
TSH	AccuBind [®] ELISA Microwells		AccuLite [®] CLIA Microwells	
	Item			
	TSH (Cat #)	325-300A (96 wells) 325-300B (192 wells) 325-300D (480 wells) 325-300E (960 wells)		375-300A (96 wells) 375-300B (192 wells) 375-300D (480 wells) 375-300E (960 wells)
	Method Principle Calibrators Sample Sensitivity Total Assay Time	Enzyme Immunoassay, Colorimetric Streptavidin Biotin Based Sandwich Assay 0, 0.5, 2.5, 5.0, 10, 20, 40 µU/ml-2nd (IRP 80/558) 50 µl 0.078 µU/ml 75 min		Enzyme Immunoassay, Chemiluminescence Streptavidin Biotin Based Sandwich Assay 0, 0.5, 2.5, 5.0, 10, 20, 40 µU/ml (2nd IRP 80/558) 50 µl 0.0062 µU/ml 50 min



THYROID cont.

Rapid TSH	<div> <div>AccuBind</div> <div>ELISA Microwells</div> </div>		<div> <div>AccuLite</div> <div>CLIA Microwells</div> </div>	
	Item			
	Rapid TSH (Cat #)	6025-300A (96 wells) 6025-300B (192 wells)	6075-300A (96 wells) 6075-300B (192 wells)	
	Method Principle Calibrators Sample Sensitivity Total Assay Time	Enzyme Immunoassay, Colorimetric Streptavidin Biotin Based Sandwich Assay 0, 0.5, 2.5, 10, 30, 100 µU/ml-2nd (IRP 80/558) 25 µl 30 Min incubation: 0.10 µU/ml 45 min	Enzyme Immunoassay, Chemiluminescence Streptavidin Biotin Based Sandwich Assay 0, 0.5, 2.5, 10, 30, 100 µU/ml-2nd (IRP 80/558) 25 µl 0.03 µU/ml 35 min	

T3	<div> <div>AccuBind</div> <div>ELISA Microwells</div> </div>		<div> <div>AccuLite</div> <div>CLIA Microwells</div> </div>	
	Item			
	T3 (Cat #)	125-300A (96 wells) 125-300B (192 wells) 125-300D (480 wells) 125-300E (960 wells)	175-300A (96 wells) 175-300B (192 wells) 175-300D (480 wells) 175-300E (960 wells)	
	Method Principle Calibrators Sample Sensitivity Total Assay Time	Enzyme Immunoassay, Colorimetric Competitive Assay 0, 0.5, 1.0, 2.5, 5.0, 7.5 ng/ml 50 µl 0.04 ng/ml 75 min	Enzyme Immunoassay, Chemiluminescence Competitive Assay 0, 0.5, 1.0, 2.5, 5.0, 7.5 ng/ml 50 µl 0.126 ng/ml 50 min	

T3 Rapid	<div> <div>AccuBind</div> <div>ELISA Microwells</div> </div>	
	Item	
	T3 Rapid (Cat #)	11225-300A (96 wells) 11225-300B (192 wells)
	Method Principle Calibrators Sample Sensitivity Total Assay Time	Enzyme Immunoassay, Colorimetric Competitive Assay, Antibody-Coated Plate 0, 0.5, 1.0, 2.5, 5.0, 7.5 ng/ml 50 µl 0.068 ng/ml 45 min (from 75 min)

T3 SBS	<div> <div>AccuBind</div> <div>ELISA Microwells</div> </div>		<div> <div>AccuLite</div> <div>CLIA Microwells</div> </div>	
	Item			
	T3 (Cat #) SBS	8125-300A (96 wells) 8125-300B (192 wells)	8175-300A (96 wells) 8175-300B (192 wells)	
	Method Principle Calibrators Sample Sensitivity Total Assay Time	Enzyme Immunoassay, Colorimetric Competitive Assay (Streptavidin Based) 0, 0.5, 1.0, 2.5, 5.0, 7.5 ng/ml 50 µl 0.4 ng/ml 75 min	Enzyme Immunoassay, Chemiluminescence Competitive Assay (Streptavidin Based) 0, 0.5, 1.0, 2.5, 5.0, 7.5 ng/ml 50 µl 0.04 ng/ml 50 min	

T3U	<div> <div>AccuBind</div> <div>ELISA Microwells</div> </div>		<div> <div>AccuLite</div> <div>CLIA Microwells</div> </div>	
	Item			
	T3-Uptake (Cat #)	525-300A (96 wells) 525-300B (192 wells)	575-300A (96 wells) 575-300B (192 wells)	
	Method Principle Calibrators Sample Sensitivity Total Assay Time	Enzyme Immunoassay, Colorimetric Competitive Assay 18, 25, 35, 47 %U* (Lot Specific) 25 µl N/A 75 min	Enzyme Immunoassay, Chemiluminescence Competitive Assay 18, 25, 35, 47 %U* (Lot Specific) 25 µl N/A 50 min	

THYROID cont.

fT3	<div> <div>AccuBind</div> <div>ELISA Microwells</div> </div>		<div> <div>AccuLite</div> <div>CLIA Microwells</div> </div>	
	Item			
	fT3 (Cat #)	1325-300A (96 wells) 1325-300B (192 wells) 1325-300D (480 wells) 1325-300E (960 wells)	1375-300A (96 wells) 1375-300B (192 wells) 1375-300D (480 wells) 1375-300E (960 wells)	
	Method Principle Calibrators Sample Sensitivity Total Assay Time	Enzyme Immunoassay, Colorimetric Competitive Assay 0, 1.0, 3.0, 5.0, 8.0, 16.0 pg/ml* (Lot Specific) 50 µl 0.835 pg/ml 75 min	Enzyme Immunoassay, Chemiluminescence Competitive Assay 0, 1.0, 3.0, 5.0, 8.0, 16.0 pg/ml* (Lot Specific) 50 µl 0.742 pg/ml 50 min	

T4	<div> <div>AccuBind</div> <div>ELISA Microwells</div> </div>		<div> <div>AccuLite</div> <div>CLIA Microwells</div> </div>	
	Item			
	T4 (Cat #)	225-300A (96 wells) 225-300B (192 wells) 225-300D (480 wells) 225-300E (960 wells)	275-300A (96 wells) 275-300B (192 wells) 275-300D (480 wells) 275-300E (960 wells)	
	Method Principle Calibrators Sample Sensitivity Time	Enzyme Immunoassay, Colorimetric Competitive Assay 0, 2.0, 5.0, 10.0, 15.0, 25.0 µg/dl 25 µl 0.128 µg/dl 75 min	Enzyme Immunoassay, Chemiluminescence Competitive Assay 0, 2.0, 5.0, 10.0, 15.0, 25.0 µg/dl 25 µl 0.318 µg/dl 50 min	

T4 Rapid	<div> <div>AccuBind</div> <div>ELISA Microwells</div> </div>	
	Item	
	T4 Rapid (Cat #)	11125-300A (96 wells) 11125-300B (192 wells)
	Method Principle Calibrators Sample Sensitivity Time	Enzyme Immunoassay, Colorimetric Competitive Assay, Antibody-Coated Plate 0, 2.0, 5.0, 10.0, 15.0, 25.0 µg/dl 20 µl 0.128 ug/dl 45 min (from 75 min)

T4 SBS	<div> <div>AccuBind</div> <div>ELISA Microwells</div> </div>		<div> <div>AccuLite</div> <div>CLIA Microwells</div> </div>	
	Item			
	T4 (Cat #) SBS	8225-300A (96 wells) 8225-300B (192 wells) 8225-300D (480 wells) 8225-300E (960 wells)	8275-300A (96 wells) 8275-300B (192 wells) 8275-300D (480 wells) 8275-300E (960 wells)	
	Method Principle Calibrators Sample Sensitivity Time	Enzyme Immunoassay, Colorimetric Competitive Assay (Streptavidin Based) 0, 2.0, 5.0, 10.0, 15.0, 25.0 µg/dl 25 µl 0.4 µg/dl 75 min	Enzyme Immunoassay, Chemiluminescence Competitive Assay (Streptavidin Based) 0, 2.0, 5.0, 10.0, 15.0, 25.0 µg/dl 50 µl 0.2 µg/dl 50 min	

fT4	<div> <div>AccuBind</div> <div>ELISA Microwells</div> </div>		<div> <div>AccuLite</div> <div>CLIA Microwells</div> </div>	
	Item			
	fT4 (Cat #)	1225-300A (96 wells) 1225-300B (192 wells) 1225-300D (480 wells) 1225-300E (960 wells)	1275-300A (96 wells) 1275-300B (192 wells) 1275-300D (480 wells) 1275-300E (960 wells)	
	Method Principle Calibrators Sample Sensitivity Total Assay Time	Enzyme Immunoassay, Colorimetric Competitive Assay 0, 0.4, 1.25, 2.10, 5.0, 7.40 ng/dl* (Lot Specific) 50 µl 0.314 ng/dl 75 min	Enzyme Immunoassay, Chemiluminescence Competitive Assay 0, 0.4, 1, 1.85, 3.50, 7.20 ng/dl* (Lot Specific) 50 µl 0.28 ng/dl 50 min	

VAST

Versatile Analyte Selection Technology

Monobind created VAST for smaller labs and combined up to four analytes in one kit to support smaller testing volumes. Labs choose which analyte they want to run in each well. It is the only product of its kind on the market today!



ANEMIA PANEL

Folate, Vit B12	Item	AccuBind ELISA Microwells	AccuLite CLIA Microwells
	Folate, Vit B12 (Cat #)	7825-300B (192 wells, universal-analyte plate) Combi-Cal® single-serum-analyte matrix	7875-300B (192 wells, universal-analyte plate) Combi-Cal® single-serum-analyte matrix
	Method Principle	Enzyme Immunoassay, Colorimetric Streptavidin Biotin Based Sandwich Assay	Enzyme Immunoassay, Chemiluminescence Streptavidin Biotin Based Sandwich Assay
	Calibrators	Folate: 0, 1, 2.5, 5, 10, 25 ng/ml Vit B12: 0, 125, 250, 500, 1000, 2500 pg/ml	Folate: 0, 1, 2.5, 5, 10, 25 ng/ml Vit B12: 0, 125, 250, 500, 1000, 2500 pg/ml
	Sample Sensitivity	Folate: 0.52 ng/ml Vit B12: 70.13 pg/ml	Folate: 0.23 ng/ml Vit B12: 42.12 pg/ml
	Total Assay Time	Folate: 65 min Vit B12: 95 min	Folate: 50 min Vit B12: 80 min

CANCER PANEL

AFP,CEA,PSA	Item	AccuBind ELISA Microwells	AccuLite CLIA Microwells
	AFP,CEA,PSA (Cat #)	8425-300B (192 wells, universal-analyte plate) Combi-Cal® single-serum-analyte matrix	8475-300B (192 wells, universal-analyte plate) Combi-Cal® single-serum-analyte matrix
	Method Principle	Enzyme Immunoassay, Colorimetric Streptavidin Biotin Based Sandwich Assay	Enzyme Immunoassay, Chemiluminescence Streptavidin Biotin Based Sandwich Assay
	Calibrators	AFP: 0.5, 25, 100, 250, 500 ng/ml (IRP 72/225) CEA: 0.5, 10, 25, 100, 250 ng/ml (IRP 73/601) PSA: 0.2, 5, 10, 25, 50 ng/ml (IS 96/670)	AFP: 0.5, 25, 100, 250, 500 ng/ml (IRP 72/225) CEA: 0.5, 10, 25, 100, 250 ng/ml (IRP 73/601) PSA: 0.2, 5, 10, 25, 50 ng/ml (IS 96/670)
	Sample Sensitivity	AFP: 0.454 ng/ml CEA: 0.078 ng/ml PSA: 0.041 ng/ml	AFP: 0.168 ng/ml CEA: 0.018 ng/ml PSA: 0.004 ng/ml
	Total Assay Time	75 min	50 min

DIABETES PANEL

C-peptide, Insulin	Item	AccuBind ELISA Microwells	AccuLite CLIA Microwells
	C-peptide, Insulin	7325-300A (192 wells, universal-analyte plate) Combi-Cal® single-serum-analyte matrix	7375-300A (192 wells, universal-analyte plate) Combi-Cal® single-serum-analyte matrix
	Method Principle	Enzyme Immunoassay, Colorimetric Streptavidin Biotin Based Sandwich Assay	Enzyme Immunoassay, Chemiluminescence Streptavidin Biotin Based Sandwich Assay
	Calibrators	Insulin: 0, 5, 25, 50, 100, 300 µU/ml C-peptide: 0, 0.2, 1, 2, 5, 10 ng/ml	Insulin: 0, 5, 25, 50, 100, 300 µU/ml C-peptide: 0, 0.2, 1, 2, 5, 10 ng/ml
	Sample Sensitivity	Insulin: 0.182 µU/ml and C-peptide: 0.020 ng/ml	Insulin: 0.114 µU/ml and C-peptide: 0.012 ng/ml
	Total Assay Time	135 min	65 min

FERTILITY PANEL

hCG, FSH, LH, PRL	Item	AccuBind ELISA Microwells	AccuLite CLIA Microwells
		8325-300B (192 wells, universal-analyte plate) Combi-Cal® single-serum-analyte matrix	8375-300B (192 wells, universal-analyte plate) Combi-Cal® single-serum-analyte matrix
	Method Principle	Enzyme Immunoassay, Colorimetric Streptavidin Biotin Based Sandwich Assay	Enzyme Immunoassay, Chemiluminescence Streptavidin Biotin Based Sandwich Assay
	Calibrators	hCG: 0, 25, 100, 250, 500, 1000 mIU/ml (3rd IS 75/537) FSH: 0, 5, 10, 25, 50, 100 mIU/ml (2nd IRP 78/549) LH: 0, 5, 25, 50, 100, 200 mIU/ml (1st IRP 68/40) PRLs: 0, 10, 25, 50, 100, 250 ng/ml (3rd IS 84/500)	hCG: 0, 25, 100, 250, 500, 1000 mIU/ml (3rd IS 75/537) FSH: 0, 5, 10, 25, 50, 100 mIU/ml (2nd IRP 78/549) LH: 0, 5, 25, 50, 100, 200 mIU/ml (1st IRP 68/40) PRLs: 0, 10, 25, 50, 100, 250 ng/ml (3rd IS 84/500)
	Sample Sensitivity	hCG & PRLs: 25 µl FSH & LH: 50 µl hCG: 3 mIU/ml FSH: 0.4 mIU/ml LH: 0.5 mIU/ml PRLs: 1.6 ng/ml	hCG & PRLs: 25 µl FSH & LH: 50 µl hCG: 5 mIU/ml FSH: 0.2 mIU/ml LH: 0.2 mIU/ml PRLs: 0.8 ng/ml
	Total Assay Time	hCG: 35 min FSH, LH, PRLs: 75 min	hCG: 25 min FSH, LH: 50 min, PRLs: 65 min

PRENATAL PANEL

AFP, hCG, uE3	Item	AccuBind ELISA Microwells	AccuLite CLIA Microwells
	AFP, hCG, uE3 (Cat #)	8525-300A (96 wells) 8525-300B (192 wells) (192 wells, universal-analyte plate) Combi-Cal® single-serum-analyte matrix	8575-300A (96 wells) 8575-300B (192 wells) (192 wells, universal-analyte plate) Combi-Cal® single-serum-analyte matrix
	Method Principle	Enzyme Immunoassay, Colorimetric Streptavidin Biotin Based Sandwich Assay	Enzyme Immunoassay, Chemiluminescence Streptavidin Biotin Based Sandwich Assay
	Calibrators	AFP: 0, 10, 25, 75, 150, 400 ng/ml hCG: 0, 10, 25, 50, 100, 250 mIU/ml uE3: 0, 0.5, 1.0, 2.5, 10, 20 ng/ml	AFP: 0, 10, 25, 75, 150, 400 ng/ml hCG: 0, 10, 25, 50, 100, 250 mIU/ml uE3: 0, 0.5, 1.0, 2.5, 10, 20 ng/ml
	Sample Sensitivity	AFP, hCG, uE3: 25 µl AFP: 1.0 ng/ml, hCG: 0.8 mIU/ml uE3: 0.115 ng/ml	AFP, hCG, uE3: 25 µl AFP: 1.0 ng/ml, hCG: 0.8 mIU/ml uE3: 0.115 ng/ml
	Total Assay Time	75 min	50 min

THYROID PANEL

T3, T4, TSH	Item	AccuBind ELISA Microwells	AccuLite CLIA Microwells
	T3, T4, TSH (Cat #)	8025-300B (192 wells, universal-analyte plate) Combi-Cal® single-serum-analyte matrix	8075-300B (192 wells, universal-analyte plate) Combi-Cal® single-serum-analyte matrix
	Method Principle	Enzyme Immunoassay, Colorimetric Streptavidin Biotin Based Sandwich Assay	Enzyme Immunoassay, Chemiluminescence Streptavidin Biotin Based Sandwich Assay
	Calibrators	T3: 0, .5, 1, 2.5, 5, 7.5 ng/ml T4: 0, 2, 5, 10, 15, 25 µg/dl TSH: 0, 0.5, 2.5, 10, 20, 40 µU/ml	T3: 0, .5, 1, 2.5, 5, 7.5 ng/ml T4: 0, 2, 5, 10, 15, 25 µg/dl TSH: 0, 0.5, 2.5, 10, 20, 40 µU/ml
	Sample Sensitivity	T3, TSH: 50 µl T4: 25 µl T3: 0.04 ng/ml T4: 0.4 µg/dl TSH: 0.078 µU/ml (1 hour incubation)	T3, TSH: 50 µl T4: 25 µl T3: 0.02 ng/ml T4: 0.2 µg/dl TSH: 0.05 µU/ml
	Total Assay Time	75 min	50 min

FT3, FT4, TSH	Item	AccuBind ELISA Microwells	AccuLite CLIA Microwells
	FT3, FT4, TSH (Cat#)	7025-300B (192 wells, universal-analyte plate) Combi-Cal® single-serum-analyte matrix	7075-300B (192 wells, universal-analyte plate) Combi-Cal® single-serum-analyte matrix
	Method Principle	Enzyme Immunoassay, Colorimetric Streptavidin Biotin Based Sandwich Assay	Enzyme Immunoassay, Chemiluminescence Streptavidin Biotin Based Sandwich Assay
	Calibrators	ft3: 0, 1.3, 3.0, 8, 12, 22 pg/ml ft4: 0, 0.5, 1.2, 2.4, 4.2, 7.6 ng/dl TSH: 0, 0.5, 2.5, 10, 20, 40 µU/ml	ft3: 0, 1.3, 3.0, 8, 12, 22 pg/ml ft4: 0, 0.5, 1.2, 2.4, 4.2, 7.6 ng/dl TSH: 0, 0.5, 2.5, 10, 20, 40 µU/ml
	Sample Sensitivity	ft3: 50 µl, TSH & FT4: 25 µl ft3: 0.04 pg/ml, ft4: 0.04 ng/dl TSH: 0.065 µU/ml (1 hour incubation)	ft3: 50 µl, TSH & FT4: 25 µl ft3: 0.04 pg/ml, ft4: 0.03 ng/dl TSH: 0.065 µU/ml (1 hour incubation)
	Total Assay Time	75 min	65 min



CONTROLS

Multi-Ligand	Item	Multiligand Tri-Level Universal Control, Dried
	(Cat #)	ML-300B
	Analytes	Tri-level assayed control to validate range of immunoassays AFP, CEA, Cortisol, C-Peptide, DHEA, DHEA-S, DIG, Estradiol, Estriol, Ferritin, Folate, FSH, hCG, hGH, IgE, Insulin, LH, PRL, Progesterone, PSA, FPSA, SHBG, TBG, Testosterone, Free Testosterone, T ₃ , FT ₃ , T ₃ U, T ₄ , FT ₄ , TSH, Vit B ₁₂ , Vit D, 17OHP
	Sensitive & Specific	Human Serum Based
	Packaging	3 levels x 2 each at 3 ml fill = 18 ml
	Shelf Life	3 years unopened & 30 day open at 2-8°C
	Universal Control	Use with RIA, EIA, ELISA, CLIA, FIA & FPIA
	Assayed Values	Mean analysis for Monobind AccuBind ELISA & AccuLite CLIA

CONTROLS cont.



Maternal	Item	Maternal Tri-Level Control, Dried
	(Cat #)	MC-300
	Description	Tri-level control for hCG, Free β hCG, AFP, and uE ₃ for pregnancy monitoring
	Sensitive & Specific	Human Serum Based
	Packaging	3 levels x 2 each at 5 ml fill = 30 ml
	Shelf Life	3 years unopened & 30 day open at 2-8°C
	Universal Control	Use with RIA, EIA, ELISA, CLIA, FIA & FPIA
	Assayed Values	Mean analysis for Monobind AccuBind ELISA & AccuLite CLIA

Anti-Tg & Anti-TPO	Item	Anti-Tg & Anti-TPO Control - Positive & Negative, Liquid
	(Cat #)	AIT-101
	Description	Liquid, positive & negative control to validate TgAb/ TPOAb assays used in diagnosis of autoimmune thyroid conditions
	Sensitive & Specific	Human Serum Based
	Packaging	2 levels x 3 each at 1 ml fill = 6 ml
	Shelf Life	5 years unopened & 30 day open at 2-8°C
	Universal Control	Use with RIA, EIA, ELISA, CLIA, FIA & FPIA
	Assayed Values	Mean analysis for Monobind AccuBind ELISA & AccuLite CLIA

TBG	Item	TBG Tri-Level Control, Liquid
	(Cat #)	TBG-300
	Description	Liquid, tri-level control to validate TBG assays used in diagnosis of thyroid conditions
	Sensitive & Specific	Human Serum Based
	Packaging	3 levels x 2 each at 1 ml fill = 6 ml
	Shelf Life	5 years unopened & 30 day open at 2-8°C
	Universal Control	Use with RIA, EIA, ELISA, CLIA, FIA & FPIA
	Assayed Values	Mean analysis for Monobind AccuBind ELISA & AccuLite CLIA

Tg	Item	Tg Tri-Level Control, Liquid
	(Cat #)	TG-300
	Description	Liquid, tri-level control to validate Tg assay used in monitoring of thyroid functionality in post-operative thyroidectomy patients
	Sensitive & Specific	Human Serum Based
	Packaging	3 levels x 2 each at 3 ml fill = 18 ml
	Shelf Life	3 years unopened & 30 day open at 2-8°C
	Universal Control	Use with RIA, EIA, ELISA, CLIA, FIA & FPIA
	Assayed Values	Mean analysis for Monobind AccuBind ELISA & AccuLite CLIA



Anti-H. Pylori	Item	Anti-H. Pylori Control – Positive & Negative, Dried
	(Cat #)	HPC-300
Description		Lyophilized, positive and negative control to Validate H. Pylori (IgA, IgG, IgM) assays
Sensitive & Specific		Human Serum Based
Packaging		2 levels x 3 each at 1 ml fill = 6ml
Shelf Life		3 years unopened & 30 day open at 2-8°C
Universal Control		Use with RIA, EIA, ELISA, CLIA, FIA & FPIA
Assayed Values		Mean analysis for Monobind AccuBind ELISA & AccuLite CLIA

Tumor Marker	Item	Tumor Marker Tri-Level Control, Liquid
	(Cat #)	TMC-300
Description		Liquid, tri-level control to validate cancer antigen (CA 125, CA 15-3, CA 19-9) assays.
Sensitive & Specific		Human Serum Based
Packaging		3 levels x 2 each at 2 ml fill = 12 ml
Shelf Life		3 years unopened & 30 day open at 2-8°C
Universal Control		Use with RIA, EIA, ELISA, CLIA, FIA & FPIA (Assayed Values for AccuBind & AccuLite)
Assayed Values		Mean analysis for Monobind AccuBind ELISA & AccuLite CLIA

Custom Control	Item	Custom Matrix Controls
	(Cat #)	CustControl
Description		Control manufacturing to exact requirements. Matrices developed on project basis and have included homocystine, CRP and general immunology.
Sensitive & Specific		Human or Animal Serum
Packaging		Per Customer Requirements
Universal Control		Use with RIA, EIA, ELISA, CLIA, FIA & FPIA

> Contact us with your project.

DILUANTS

“o” Calibrator Matrix	Item	440MM	625MM	144MM	8525145MM	731MM
	Use	o Calibrator for multi-ligands (see website for analyte list)	o Calibrator for Steroid (All) & Thyroid (T3, T4, TSH) Assays	Dilutant for Anti-Tg, Anti-TPO, Anti-H-Pylori Assays	Dilutant for High Value Pregnancy Patients & Assays	o Calibrator for FSH, Ferritin, Folate & Vit B12
Volume		20 ml	20 ml	20 ml	40 ml	20 ml

Plate Wash

Fully Automated Plate Washer



> Fast, Precise, Reliable, and Programmable

- Washes flat, round, and V-bottom plates and strips.
- No user adjustments required. Automatic calibration, alignment, and last row detection.
- Wash cycles set for Monobind assays.
- 6 ready-to-run wash programs.
- Large, non-volatile memory stores at least 50 user-specified wash protocols.
- Precision operation with constant monitoring of vacuum and pressure. Pump cycles only when necessary for quiet operation.
- Programmable automatic rinse cycle.
- Ready to run: bottles, aerosol shield, 8-way manifold included.
- 12 and 16 position wash heads available.
- NRTL and CE certified.





Ready-to-use ELISA instrument programmed with Monobind assays and proprietary formula designed, optimized and certified by Monobind for two-point analysis.

> Features

- Standalone ELISA reader with integrated computer and printer
- Easy and intuitive touch-screen operation with stylus
- Dynamic reading to 4.5 OD or above (from 3.0 maximum with Eldex 3.8)
- Carrier with (new) automated movement handles 3 strips with 1 to 12 wells/ strip
- Ability to program and read different analytes in strip 1 through 3 or to read all 3strips with the same analyte automatically
- Full 96 well-plate read in 3 to 4 shifts (2 minutes per load/ shift)
- Test storage increased from 100 to 120 tests
- Ten digit alphanumeric sample ID now available for patient tracking
- Password protection system enables open or closed instrument use
- Administrator tool provides summary of wells read per each stored test to assist distributors with laboratory-use monitoring
- USB port easily imports new software or exports readings, including graphs to a PC for archiving
- 110/220 power options, light weight, small footprint
- Optics include 4 filters (405, 450, 492 and 630)
- Quality instrument, US-built, CE mark and ISO standards, NRTL certified

> NeoEldex is completely integrated with our immunoassays

- Programmed with Monobind’s 50+ AccuBind® ELISA tests, parameters and data analytics for optimal results
- Exceptionally easy: Simply select test using touch screen then insert wells
- Exclusive 2PT Calibration enables labs to cut cost-per-test by using two calibrators (instead of six or seven) on same lot kits within 30-days of running full curve
- Run with Monobind multi-ligand controls to ensure total quality, recommended for 2PT calibration



Broad Spectrum of 35+ Analytes



Available in 75+ analytes



> Compact Convenience

‘Plug and play’ instrument with compact design offers convenience in ELISA testing. With its streamlined lines and metal enclosure, PrisMatic fits on any lab bench and provides excellent optics and performance, reading a 96-well plate in about 8 seconds using its 8-channel reader.

> A Winning Combination

With PrisMatic and AccuBind, Monobind delivers a powerful ELISA platform with a 50+ test menu of assays preloaded in the instrument’s manger software.

> Tiny Footprint, PC Powered Analytics

PrisMatic uses the power and efficiency of your PC to deliver sophisticated data analysis, curve fitting, r reporting and data storage.

Simply connect via USB and load PrisMatic’s software containing the device manager and AccuBind test data. Then select desired assay(s) and start running AccuBind ELISAs right away.

> Test with Ease and Confidence

PrisMatic is a user-friendly instrument certified by Monobind to ensure the optimal performance of AccuBind reagents giving you the very best in ELISA testing. Built-in references further monitor calibration to maintain peak function.

All the flexibility a clinical lab needs: Users may add new ELISA protocols specifying a variety of calculation modes, including point-to-point, linear regressions, and dose response modes and protocol types such as immunometric, competitive, cutoff and raw data.

> Key Features

- Drag-and-drop test selection to easily format plate
- Program and read any number of assays per plate
- Stored curve and two point calibration options
- Storage of unlimited protocols (only limit is PC memory)
- Full support of kit lot numbers
- Storage of assay results, allowing off-line reevaluation
- Curve plotting and editing
- Open Instrument for use with other ELISA-assays
- Password protected for limited or closed system use
- Test counter to monitor instrument use



> Specifications

Measurement Range	-0.20 to 4.5 or above optical density
Photometric Accuracy	+/- 1%
Stability	Drift of no more than 0.005A in 8 hrs
Light Source	Remote halogen lamp with saver features
Wave Lengths	405, 450, 492, 630 plus optional filters available
PC operating system	USB Port, Win 2000, Win NT, Win XP, Win Vista, Win 7
Power supply	115V or 230V AC, 50 -60Hz
Weight, Dimensions	4.5 kg, 18.5 x 18.5 x 42 cm
Quality	US-built, NRTL listed, CE Mark and ISO Standards





Monobind now offers a second generation of its revolutionary entry-level instrument that puts chemiluminescence within reach of any lab

> Carrier handles 3 strips of 1 to 12 wells per strip

- Full 96-well plate read in 3 to 4 shifts (2 minutes per load/ shift)
- Program and read different analytes on each strip or same analyte on all three strips automatically
- Monobind's robust CLIA reagents produce a stable light signal for 10-minutes after test completion allowing ample time for measurement

> Instrument utilizes photo-multiplier tube (PMT) as detection device

- Superior to electronic diode allows full benefit of CLIA: increased sensitivity and detection range
- Fully stand alone instrument with an internal thermal printer – computer may be used to download assay data

> NeoLumax Specifications

- Sensitivity of 1 x 10-20 M/L
- Essentially no crosstalk
- Power options 110-120/220-240 VAC, 50-60 Hz, 50 Watts, switchable
- USB port allow for import of new software and export of readings, including graphs
- Compact unit with dimensions of 24.7 x 34 x 13 cm and weight of 2.5 kg
- Quality instrument, US-built, CE mark and ISO standards, NRTL certified



Broad Spectrum of 35+ Analytes

> NeoLumax is completely integrated with our immunoassays

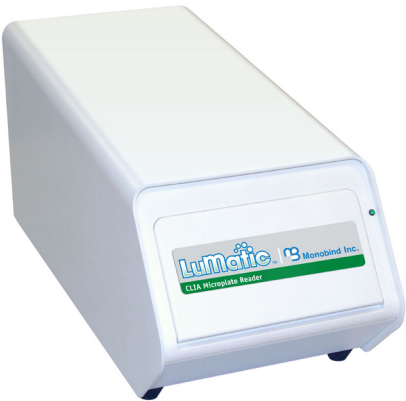
- Preprogrammed with all Monobind's 45+ CLIA tests, parameters and optimal settings to allow plug-and-play
- Exceptionally easy: Simply select test using intuitive touch-screen then insert wells
- Exclusive 2PT Calibration enables labs to cut cost-per-test by using only two calibrators (instead of six) on same lot kits within 20-days of running full curve
- Run with Monobind multi-ligand controls to ensure total quality, recommended for 2PT
- NeoLumax is an open system to allow maximum value for labs and offers a password system for optional closed system control

> Additional Features

- Test storage increased from 100 to 120 tests
- Ten digit alphanumeric sample ID now available for patient tracking
- Administrator tool provides summary of wells read per each stored test to assist distributors with laboratory-use monitoring



Available in 75+ Analytes



> Today's Most Affordable Analyzer

Making another leap towards bringing CLIA to labs everywhere, Monobind presents LuMatic™, the world's lowest-priced plate chemiluminescence analyzer – a machine optimized for Monobind's AccuLite® reagent line and an excellent plug-in for Monobind's Autoplex™ Automated ELISA and CLIA Analyzer.

> A Winning Combination

Now you can have all the benefits of CLIA technology: sensitivity, speed and dynamic range, in an affordable package. With LuMatic and AccuLite, Monobind gives you the only open-system CLIA platform with a 45+ test menu.

> Tiny Footprint, PC Powered Analytics

LuMatic uses the power and efficiency of your PC to deliver sophisticated data analysis, curve fitting, reporting and data storage. It is based on the same software Monobind's Autoplex Analyzer, and may be used together with a single interface.

Simply connect via USB and load LuMatic's software containing the device manager and AccuLite test data. Then select desired assay(s) and start running AccuLite CLIA right away.

> Test with Ease and Confidence

LuMatic is a user-friendly instrument certified by Monobind to ensure the optimal performance of AccuLite reagents giving you the very best in CLIA testing. Built-in references further maintain peak function with continuous instrument calibration. All the flexibility a clinical lab needs: Users may add new CLIA protocols specifying a variety of calculation modes, including point-to-point, linear and log regressions, and log logit modes and protocol types such as immunometric, competitive, cutoff and raw data.

> Specifications

Detection	Glow chemiluminescence by Photomultiplier Tube (PMT)
Sensitivity/ Limit	HRP 1 x 10-18 moles, ALP 1x10-21moles
Linear Dynamic Range	106 RLU
PC operating system	Win 2000, Win NT, Win XP, Win Vista
Power supply	110-250V AC
Weight, Dimensions	5 kg, 19 x 20.3 x 42 cm
Regulations	NRTL listed, CE

> Key Features

- Drag-and-drop test selection to easily format plate
- Multiple analytes per plate (up to 12)
- Two point calibration using stored curve
- Storage of unlimited protocols (only limit is PC memory)
- Full support of kit lot numbers
- Storage of assay results, allowing off-line reevaluation
- Curve plotting and editing
- Open Instrument for use with other CLIA-assays

> 2-Point Calibration, Big Value

The robustness of AccuLite allows for two-point calibration enabling labs to run more patient samples per plate, reducing reagent use and overall test cost. LuMatic and AccuLite offer a convenient and affordable package designed to bring high quality immunoassays to markets worldwide.

AutoPlex®

ELISA & CLIA Workstation

Get the convenient, flexible & precise solution for ELISA & CLIA automation

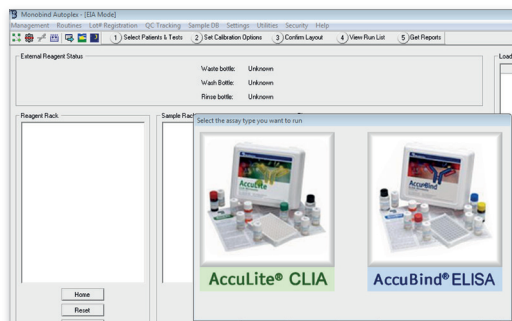
> Monobind offers an automated platform for managing & running assays.

> Features

- Internal optical ELISA reader, CLIA read in separately sold device through integrated software
- Exceptional performance with Monobind immunoassays
- Simultaneous processing of 1 to 12 analytes with automated work-schedule
- Within assay precision ($\leq 4\%$ CV) based on five samples run in duplicate
- Reproducibility of dose response variable ($\leq 3\%$ CV) based on adjacent duplicate samples
- Dose response drift ($\leq 5\%$ CV) based on three positions in microplate
- Excellent correlation (.99 R) and nearly perfect slope with manual method
- Fast processing rates in single plate design
- On average 50 samples performed per hour with Monobind immunoassay
- Dilutions, possible, dispensing single or multiple reagents
- Two syringe pumps for accuracy, stainless steel probes
- Min and max dispensing volumes 2 μ l and 1.95 mL
- Maximum number of specimens 96, up to 44 reagents with standard reagent rack of 27
- Custom reagent rack for Monobind AccuBind and AccuLite kits with easy to read icons



Autoplex shown with optional LuMatic CLIA reader, ask us about package rates.



> Autoplex™ is completely integrated with Monobind's immunoassays

- Programmed with all of Monobind's 55+ tests to allow plug-and-play
- Simply choose CLIA or ELISA mode to access test parameters
- Internal CLIA reader in development
- PC controlled using intuitive Windows® based program
- Versatile, open system
- NRTL Listed, CE Marked

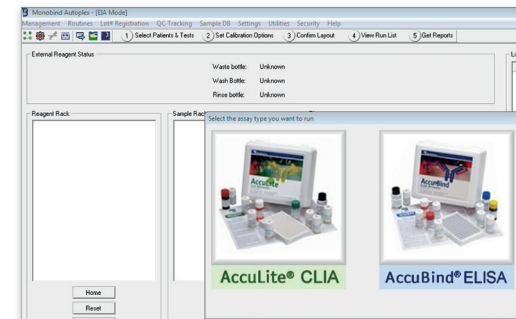
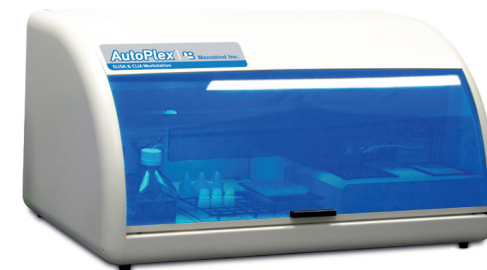
AutoPlex® 2nd GENERATION

ELISA & CLIA Analyzer

Get the convenient, flexible & precise solution for ELISA & CLIA automation

> Features

- Internal optical ELISA and combination luminescence CLIA reader
- Exceptional performance with Monobind immunoassays
- Simultaneous processing of 1 to 12 analytes with automated work-schedule
- Within assay precision ($\leq 4\%$ CV) based on five samples run in duplicate
- Reproducibility of dose response variable ($\leq 3\%$ CV) based on adjacent duplicate samples
- Dose response drift ($\leq 5\%$ CV) based on three positions in microplate
- Excellent correlation (.99 R) and nearly perfect slope with manual method
- Fast processing rates in single plate design
- On average 50 samples performed per hour with Monobind immunoassay
- Dilutions, possible, dispensing single or multiple reagents
- Two syringe pumps for accuracy, stainless steel probes
- Min and max dispensing volumes 2 μ l and 1.95 mL
- Maximum number of specimens 96, up to 44 reagents with standard reagent rack of 27
- Custom reagent rack for Monobind AccuBind and AccuLite kits with easy to read icons



> Autoplex is completely integrated with Monobind's immunoassays

- Programmed with all of Monobind's 55+ tests to allow plug-and-play
- Simply choose CLIA or ELISA mode to access test parameters
- PC controlled using intuitive Windows® based program
- Versatile, open system
- NRTL Listed, CE Marked

> Also available in ELISA only model

A Walkaway Solution for Labs

Monobind offers a two-plate analyzer to manage, program & run assays.

> Features

Ultimate Flexibility

- Ability to run ELISA and CLIA together on strips within each plate or on two-separate plates
- Ability to process up to 12-analytes per plate, a total of 24 analytes, using the smart work-schedule

Large Sample Capacity & Reagent Rack

- 90-samples in serum vials or 13x100 mm tubes with integrated barcode scanning for positive-patient ID system
- Optional Monobind reagent rack with easy-to-read icons for 29-bottles

User-Friendly Software

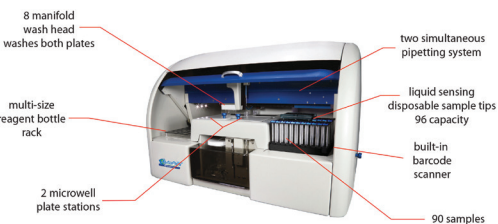
- Plan runs quickly in a simple UI that shows workflow
- Program new assays in a few easy steps with system prompts
- Customize reports using a variety of options to meet your lab needs

ELISA Readings

- Accuracy of $\pm 1\%$ + 0.01 A or better up to 1.5 A and $\pm 2\%$ or better above 1.5 A
- Optical filter range: 4 standard filters 405, 450, 492, 630 nm, optional additional filters

CLIA Readings

- PMT detector with detection limit: HRP 1x10⁻¹⁸ moles, ALP 1x10⁻²¹ moles



Exceptional Fit for Monobind Assays

- Test files available for 70+ analytes in ELISA and CLIA
- Within assay precision ($\leq 4\%$ CV) based on five samples run in duplicate
- Reproducibility of dose response variable ($\leq 3\%$ CV) based on adjacent duplicate samples
- Dose response drift ($\leq 5\%$ CV) based on three positions in microplate
- Excellent correlation (.99 R) and nearly perfect slope with manual method

Intelligent Design

- On-plate dilutions add convenience
- Multiple-well reagent pick-up and dispensing saves time
- Liquid-sensing probes for better accuracy
- Optional disposable sample-tips meet lab preferences
- Smart design for fast processing rates

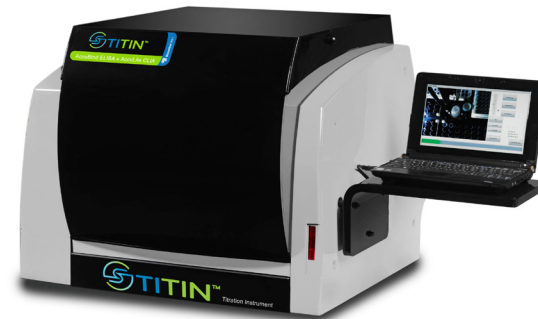
Compact Footprint

- Height - 57.7 cm
- Width - 107 cm
- Depth - 62.4 cm
- Weight - 60 kg

Intuitive Workflow Software



Titration Instrument Automation for ELISA & CLIA



Monobind offers a powerful & compact walk-away platform manufactured by Gold Standard Diagnostics

- Internal LED spectrophotometer for ELISA and (optional) combination-luminescence reader for CLIA
- Dual (2) microplate design offers streamlined processing, reading and reporting of results
- Open architecture, fully customizable reporting and test designer allows assay configuration (down to minute detail) with intuitive software (Multilanguage support, Windows-7 based and installed in the included laptop)
- Best-of-breed features: intelligent rack, built-in patient-barcode scanner, and on-board camera for remote troubleshooting
- High-volume sample capacity with 192 patient positions on convenient sliding sample-tray
- Programmable for 16 custom reagent positions
- Simultaneous processing of 1 to 8 analytes in a single batch
- Compact footprint of 2' x 2', fits on 60cm deep standard lab bench and weighs just 65 pounds

Instrument & Software Specifications

- Pre-dilution of samples on one plate, incubator with $\leq 40^\circ\text{C}$ (for non-Monobind assays) and two external wash bottles
- Single probe, dual needle with dispense volume up to 500 μl
- Photometer Wavelengths 405, 450, 550, 570 and 620 nm standard (other lengths available)
- Orbital shaker for both plates, with no-spill design, amplitude of 1mm, speeds up to 900RPM and times from 0-2 hours
- Report designer with numerous data reduction options; point-to-point, linear regression, cubic spline, 4PL, 5PL, Lin-Lin, Lin-Log, Log-Log representation
- Power supply 120-265V, 50-60Hz
- Lab System Integration (LSI) with Bi-directional, RS232, USB, TCP/IP options NRTL Listed, CE Marked

Monobind assay integration

- Exceptional performance with Monobind immunoassays and optimized test files
- Within assay precision ($\leq 5\%$ CV) based on five samples run in duplicate
- Excellent correlation and nearly perfect slope with manual method
- Software flexibility post-run in worklist assists users with data analysis and maximizes lab efficiency

Training & Support

- Included virtual or CA-provided training and learning resources by Gold Standard Diagnostics (on-site, fee based on request)
- Front-line operational support by Monobind

Orders & Inquiries

Clinical Laboratories

Please place your orders through the Monobind Distributor in your region. If you do not know your regional distributor, you may contact Monobind for a referral.

Distributors

Existing distributors: please order online by logging into our web site using your account information, or send us a formal purchase order including the item catalog number, description, quantity required, the item rate, extended and total value.

New distributors: we welcome the opportunity to do business with you. To better understand and meet your diagnostic needs, please contact us with your product interest and distribution region. You may also visit us online and complete the New Customer Inquiry Form located in the Support Area of our web site.



TITIN-s™ Titration Instrument Automation for ELISA & CLIA



Monobind offers a powerful & compact walk-away platform manufactured by Gold Standard Diagnostics in Single Plate Design

- Internal LED spectrophotometer for ELISA and (optional) combination-luminescence reader for CLIA
- Single microplate design offers streamlined processing, reading and reporting of results
- Open architecture, fully customizable reporting and test designer allows assay configuration (down to minute detail) with intuitive software (Multilanguage support, Windows-7 based and installed in the included laptop)
- High-volume sample capacity with 96 patient positions on convenient sliding sample-tray with option for 12, 13 and 16 mm diameter tubes (or custom)
- Programmable for 9 custom reagent positions
- Simultaneous processing of 1 to 8 analytes in a single batch
- Low consumable costs, no disposable tips
- Compact footprint of 2' x 2', fits on 53cm deep standard lab bench and weighs just 60 pounds
- Cost effective and efficient

Instrument & Software Specifications

- Pre-dilution plate for samples (in addition to reaction-plate), incubator with $\pm 40^{\circ}\text{C}$ (for non-Monobind assays) and two external wash bottles
- Single probe, dual needle with dispense volume up to 300 μl
- Photometer wavelengths 405, 450, 490, 550 and 630 nm standard (other lengths available)
- Linear shaker, with no-spill design, amplitude of 1mm, speeds up to 900RPM and times from 0-2 hours
- Report designer with numerous data reduction options; point-to-point, linear regression, cubic spline, 4PL, 5PL, Lin-Lin, Lin-Log, Log-Log representation
- Power supply 120-265V, 50-60Hz
- Lab System Integration (LSI) with Bi-directional, RS232, USB, TCP/IP options
- NRTL Listed, CE Marked

Monobind assay integration

- Exceptional performance with Monobind immunoassays and optimized test files for AccuBind® ELISA and AccuLite® CLIA (55+ analytes)
- Within assay precisions $\leq 5\%$ on five plus sample duplication
- Excellent correlation and nearly perfect slope with manual method
- Software flexibility post-run in worklist assists users with data analysis and maximizes lab efficiency

Training & Support

- Included virtual or CA-provided training and learning resources by Gold Standard Diagnostics (on-site, fee-based on request)
- Front-line operational support by Monobind

Monobind Contact Information

www.monobind.com

Email:

Sales: sales@monobind.com

Orders: orders@monobind.com

Customer Service: customerservice@monobind.com

Technical Support: techsupport@monobind.com

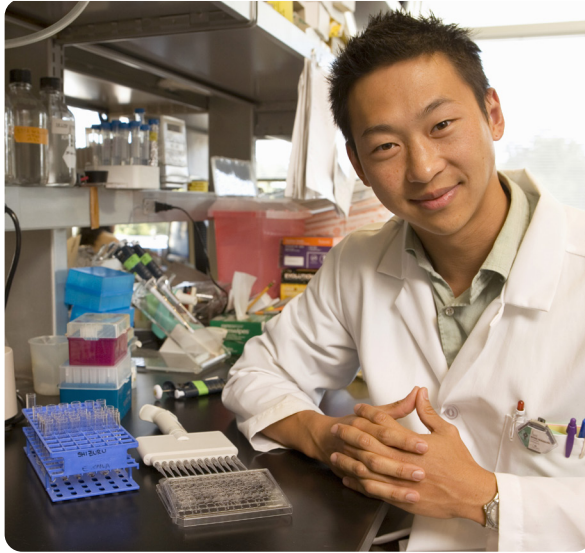
Phone: 949.951.2665

Fax: 949.951.3539

Hours of Operation: 8:30AM – 5PM Pacific Standard Time

Mail:

100 North Pointe Drive
Lake Forest, California 92630



Monobind, Inc. is a leader in diagnostic development and innovation. Founded in 1977, the company has manufactured more than 200 million immunoassays, ranking it among the industry's largest in-vitro diagnostic producers.

As a global provider, Monobind reaches more than 110+ countries with its assays, diagnostic tools, and biological raw materials. Customers such as biomedical researchers, laboratories, manufacturers, and distributors trust Monobind for quality, reliable, and cost-effective products.

With its pioneering experience and recognized R&D authority, Monobind is able to deliver products that set standards of excellence in diagnostic health-care. We look forward to working with you!

